

# Massachusetts Butterflies



Spring 2022, No. 58

*Massachusetts Butterflies* is the semiannual publication of the Massachusetts Butterfly Club, a chapter of the North American Butterfly Association. Membership in NABA-MBC brings you digital copies of *American Butterflies* and *Butterfly Gardener* (additional \$5 fee for printed copies). If you live in the state of Massachusetts, you also receive *Massachusetts Butterflies* (you can choose print or digital), and any mailings of field trips, meetings, and NABA Counts in Massachusetts. Out-of-state members of NABA-MBC, and others who wish to receive a print copy of *Massachusetts Butterflies*, may order it from our secretary for \$7 per issue, including postage; details are on the website. Regular NABA dues are \$35 for an individual and \$50 for a family. Send a check made out to “NABA” to: NABA, 4 Delaware Road, Morristown, NJ 07960, or you can join/renew online at [www.naba.org](http://www.naba.org).

## NABA-MASSACHUSETTS BUTTERFLY CLUB

### Officers:

*President:* Martha Gach, 16 Rockwell Drive, Shrewsbury, MA, 01545.  
(508) 981-8833 [martha@massbutterflies.org](mailto:martha@massbutterflies.org)

*Vice President-East:* Rosemary Mosco, [rosemary@massbutterflies.org](mailto:rosemary@massbutterflies.org)

*Vice President-West:* Carol Ann Duke, Flower Hill Farm Retreat, P O Box 454,  
Williamsburg, MA, 01096, [carol@caroldukeflowers.com](mailto:carol@caroldukeflowers.com)

*Treasurer:* Elise Barry, 363 South Gulf Road, Belchertown, MA, 01007.  
(413) 461-1205 [elise@massbutterflies.org](mailto:elise@massbutterflies.org)

*Secretary:* Barbara Volkle, 400 Hudson Street, Northboro, MA, 01532.  
(508) 393-9251 [barb620@theworld.com](mailto:barb620@theworld.com)

### Staff

*Editor, Massachusetts Butterflies:* Bill Benner, 53 Webber Road, West Whately,  
MA, 01039. (413) 320-4422 [bill@massbutterflies.org](mailto:bill@massbutterflies.org)

*Records Compiler:* Mark Fairbrother, 129 Meadow Road, Montague, MA,  
01351-9512. [mark@massbutterflies.org](mailto:mark@massbutterflies.org)

*Webmaster:* Karl Barry, 363 South Gulf Road, Belchertown, MA, 01007.  
(413) 461-1205 [karl@massbutterflies.org](mailto:karl@massbutterflies.org)

**[www.massbutterflies.org](http://www.massbutterflies.org)**

*Massachusetts Butterflies* No. 58, Spring 2022

© Copyright 2022 NABA-Massachusetts Butterfly Club. All rights reserved.

## Contents

2	The Butterfly Seeker Part 1 An Unexpected Guide: Assistance from Above	Danielle Desmarais
4	The Butterfly Seeker Part 2 The 1988 Crew	Danielle Desmarais
7	2021 Season Summary and Records	Mark Fairbrother
36	Beech Trees Host Harbinger Mourning Cloaks	Tor Hansen
40	2021 Donor - Volunteers	Elise Barry

---



Mustard White (*Pieris napi*), 5/6/21,  
Pittsfield, MA, Garry Kessler

---

Cover photo: American Lady (*Vanessa virginiensis*),  
9/11/21, Shrewsbury, MA, Bruce deGraaf

## The Butterfly Seeker Part 1

### An Unexpected Guide: Assistance from Above

By Danielle Desmarais, Hessel's Hairstreak State Search Coordinator



I would like to share a story of butterfly seeking and some assistance I received from an unexpected visitor in a local Atlantic White Cedar Swamp, on May 17th, 2021. I rode my trail bike to get to the various groves looking for the elusive Hessel's Hairstreak (*Callophrys hesseli*), whose host plant is the Atlantic White Cedar (*Chaemecyparis thyoides*). The adventure started on a clear, sunny afternoon and I had cycled over 4 miles in the preserve so far without seeing another person. All I could hear were the sounds of my tires in the sand and birds chirping.

I am always on the lookout for another access point to the many Atlantic White Cedar groves, part of an extensive nature preserve. The recent storms would down trees that create bridges over the moss-covered swampy areas from the upland forest. Otherwise, you were guaranteed to get wet and possibly sink into the sediment. The high and low bush blueberries were in bloom and the mountain laurel was close to flowering. After cycling to several

groves and walking around the swamp, shaking trees, looking at sandy areas and blooming flowers for Hessel's. I stopped at what I call the bramble, a large patch of blackberries and raspberries around the corner from the Coleman's Cove Trail entrance, which is a short trail that circles back to the main trail. Inside the cove is a grove of young Atlantic White Cedar trees no higher than 20 feet at most. In comparison, many others of that species in that preserve tower over 80 feet. In the bramble, I saw an Eastern Pine Elfin on the trail and while taking a thousand photos lying on my belly in the sand and pine needles, hoping for one good shot in focus, a huge CRASH rang out in the treetops. Looking up with my bike helmet and sunglasses still on, I saw a large, dark bird crash through the tree canopy, across the clearing where the trail was, plow into some logs and smash with a loud thud that echoed through the quiet forest. I grabbed just my camera and ran around the corner. Following the trail of destruction left in the wake of the unknown bird, (owl? hawk? eagle?) I had to swing one leg over a huge log, then swing the other leg to climb over, making sure I didn't drop my camera. I left my bike helmet and sunglasses there on the log. The struggle was real. The broken branches and disturbed leaves led to a clearing where I found... nothing... the bird was gone.

Thankfully, there was no sign of injury. After surveying the clearing, I noticed some downed pine trees from storms and a bridge to a swamp grove I had never known was there! After an hour of Hessel's searching, I found my way back to my bike as the sky quickly became stormy and monstrous-looking from the view through the open field. While browsing through the photos I took that day, it's clear to see the progression of darkness. Thunder echoed. It was about to pour, so I ran back to my bike I had left up against a tree, and got out my waterproof camera bag. I appreciated the assistance from above guiding me from above to another new grove access, and the timing that I was there to experience that. As I threw on my raincoat, I discovered the best part of my trip: the Eastern Pine Elfin was still sitting in the middle of the road exactly where I left it, posing for more pictures.

(continued adventures, next page!)

## The Butterfly Seeker Part 2

### The 1988 Crew

By Danielle Desmarais, Hessel's Hairstreak State Search Coordinator

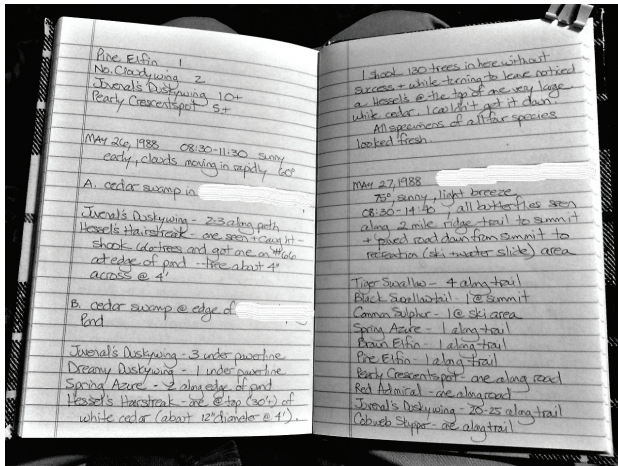


Since leading the State Hessel's Hairstreak search starting in 2018, I have been researching strategies to maximize the potential for observations for the little green butterfly during the short flight period from Mid-May to Mid-June. Looking through my huge binder of data from my contact at Natural Heritage, cross-referenced with the data I collected on my Mass Butterfly Club's led search attempts, historical aerial maps, and past research, I figured I must be missing something. What is the secret? I have yet to see a Hessel's Hairstreak. Where are they hiding?

I took over the project in 2018 from another Mass Butterfly Club member, with my background in data management and organizing but none in actual butterfly fieldwork. I had looked in almost every historical observation location thanks to the maps from Natural Heritage; I had to sign off and swear to secrecy on their details. I've logged over a hundred hours in the field and hundreds more looking at hike reports from others in the search groups. I was careful to look only in the most optimal conditions based on past observation logs: in the mid-'70s, partially sunny to sunny, not too windy, with May 20-22 being the days with the most officially

recorded observations according to the data tables I made. The majority of the reported observations across the state are from 1987 to 1989. Some of the past historical observation sites from the 1980s are now private property or town-owned protected habitats with limited access. I remember being a child of the 1980s when film and developing was a huge expense, and I wondered if the cost of film is why there were so few photos and more visual confirmations for some of the historical observations?

I always had so many questions. Some of the records didn't have any names attached. Within the email list I run specifically for this search, I asked who was part of that 1980s crew? Brian Cassie kindly offered up his search notes, meticulously written in a hardbound large notebook from 1988. This inspired me on a whole new level to take better notes. Temperature, wind direction, who he



was with, weather conditions, trails, location details, nectar sources, other notable details, and it's all in beautiful handwriting. One of the sites was a closed site that I gained access to through many emails and phone calls with the department of public works. I was given a tour of the site with the local hydrogeologist who granted me safe passage again with written permission to only bring three people with me. It was time to go back to 1988.

After inviting some of the original 1988 crew, including Brain Cassie, Mark Rosenstein, and Ron Hamburger, I planned our blast from the past adventure. I drove to the site cranking the hits

of 1988 and wore a neon hiking jacket with a sweatband for added luck. After pouring over the notes and Natural Heritage map with a GPS marker from 1988 at that site, one secret was revealed: Brian told me that finding a Hessel's Hairstreak on the host tree involves using a longer, stronger pole than the skinny hiking stick I was using. He pulled a 3 inch in diameter white plastic pipe out of his car. He said you have to shake 50 or more trees sometimes to see one. Sometimes the butterfly can land on the sand path or a flower as a source of nectar, and sometimes you need to look up, not down.

The Atlantic White Cedar trees reside in sphagnum moss-covered swamps with unstable footing. It feels like I'm on Yoda's swamp planet in Star Wars. Very wet, very slippery, and very easy to fall and hurt yourself or fall on sensitive plants. Some of the swamps have boardwalks and some don't, so the safest way is to shake the trees with a stick from a dry, safer area to see if any Hessel's Hairstreaks fly off the top. Brian Cassie demonstrated the true power of the huge plastic pole for added reach. The technique involves the triangulation of butterfly seekers, where one is shaking the tree from a path or boardwalk with the pole, and the other two are way back, looking up.

I should note that on this particular trip, one Mass Butterfly Club member craned his back upwards to look at a treetop at the end of the boardwalk, may have lost their footing on the slippery, algae-covered boardwalk planks, and fell in the pond. I took these new valuable tools and tips for searching acquired on this trip, applied them to the rest of my searches for 2021—and left a few sites completely soaked. I am still searching...

**JOIN US!** Are you intrigued enough to be interested in more Atlantic White Cedar swamp adventures? If you want more information on the Hessel's Hairstreak search in collaborating with NHESP and MBC, throughout the state including the Cape from Mid-May to Mid- June, then please email me to get on my special email list! I will provide you with all the information you need. I also have a website with information on past searches:  
**<https://www.danielledesmarais.com> under the butterfly section.**  
**Danielle Desmarais- Dldesmar@hotmail.com**



## 2021 Season Summary and Records

by Mark Fairbrother

The hardier species started showing themselves on March 10 (Mourning Cloak and Eastern Comma had the month almost to themselves), and we didn't really get variety until mid-April. The first Berkshire Co. report didn't come in until a full month later. Unsurprisingly, almost all November sightings were from near the coast. The late record for 2021 was on December 17 (Clouded Sulphur in Falmouth). Inland, the hot spots were as usual the Fannie Stebbins refuge in Longmeadow, Sheffield, and the Montague Plains. In the east, the Worcester/Shrewsbury area, the Newbury area, Woburn, Boston and Westport/Dartmouth attracted much attention, especially in the second half of the year.

Just under 5,600 records were submitted for 2021, much lower than either 2020 (7,500), or 2019 (8,800). The COVID-19 situation had eased considerably, but likely still helped to keep field trip production down, and it may have also had a lesser impact on the 4J counts and activities by independent observers. Each year, observers in MA find the same 102 or so species, and in the end, it comes down to a handful of borderline species to determine our final total for the year. In 2021 109 species were reported; this total was the result of a mixed bag of sightings. Hessel's Hairstreak went unreported. Northern Crescent was reported, but is not included here, because as far as I can tell it is difficult to get a definitive description of just what a No. Crescent even is, and exactly how it is to be identified, at least in our area. A beautiful photo of a Zebra Swallowtail from Huntington was received, as was a photo of a Gulf Fritillary from Falmouth. Because identifications were not in doubt I included them in this summary, and will let others comment on the provenance of the critters involved. Such species as Red-banded Hairstreaks, Long-tailed, Fiery, Sachem and Ocola Skippers have become pretty solid annual acquaintances, at least in sometimes limited areas. Generally, observer comments received indicated that numbers of many species were again noticeably lower this year. Except for the now-annual species noted above, there was no notable influx of southern species as occasionally happens.

If you post sightings on-line (MassLep and Facebook) during the season and then send them to me in a group of records post-season, please indicate which records, if any, were posted earlier especially on MassLep, and which were not. People submit reports one way or another; either by posting them on the MassLep butterfly list server, sending them directly to me, or posting their sightings on the Facebook page.

I'd prefer receiving them in that order, but of course I'll take them any way I can get them. Regardless of how observers submit records, please remember to state clearly the date of the actual observation, how many (if more than one) and just where they were seen, keeping in mind I and others may not be as familiar with the locations given. Examples of what is submitted each year include "that I saw last Saturday...", there were "lots" of them, and locations given that I have to go to Google to figure out what town we're talking about. Please take a moment to think of these things before hitting the "Send" button. Thank you.

Unfortunately, it's not possible to fit more than a fraction of the total records in the available space. This does not mean that they aren't important; all reported butterflies are logged in the database and help to give a picture of the health of the various butterfly populations in Massachusetts or beyond. Every year we field requests from researchers to use our database of records, for any number of studies. In deciding which records to include in the journal, and keeping in mind the space restrictions we have, I take the earliest report and the latest, the highest number reported, then try to pick records based on location across the state and throughout the season, and finally by observer. I do give small preference to records from new contributors and/or new locations and after that spread credit around generally. After that I refer back to location and time.

I go into 2022 sad for the loss of two of our best reporters- Bill Callahan, who passed away in July 2021, and Lucy Merrill-Hills, who kept such a close and productive watch on the Boston area, but who now will be keeping that same watch on Colorado.

## SWALLOWTAILS

A beautiful Zebra Swallowtail was photographed in Huntington. There were three first-brood reports for Giant Swallowtail, then a general emergence starting in late July into early September. As was the case in 2020, most reports were of single individuals, except for the species' stronghold in the Sheffield area. There was only one report of Pipevine Swallowtail, from early August in Sheffield. Black Swallowtail was around from April 6 through October 20, but generally not in any large numbers. Eastern Tiger had another solid year, with the first reported April 24, and the last October 16. There was a good increase in Canadian Swallowtail reports, mostly from the western half of the state with the exception of Shrewsbury and Dunstable! Sightings of Spicebush

Swallowtail were down, although widely reported, and the vast majority of sightings were of 1 or 2 individuals.

## WHITES AND SULPHURS

Cabbage White reports remained just under 700 again in 2021. Eleven reports of West Virginia White were received, with two from Sunderland, and the rest from the Berkshires. They are certainly out there in numerous places east into the CRV, but it is a very retiring species that flies when/where not a lot of people are around to see them. Mustard White was reported six times, all from the Windsor/Pittsfield area. Although the first Clouded Sulphur appeared in Natick on April 9, it wasn't until the second week in May that they started to be reported with any real regularity. The high count of 300 was in Williamstown on October 7th, and it was the last butterfly reported for 2021 when one was still abroad December 17th in Falmouth. Orange Sulphur had only three reports through the end of May, but after that sightings and numbers climbed for the rest of the season, which for Orange Sulphur ran through November 14, when four were seen at Salisbury.

Cloudless Sulphur reports in 2021 were half of 2020's number: 14 from 27. All were near the coast, with the last and northernmost from Newbury on October 16.

## GOSSAMER-WINGS

Harvesters are probably quite widespread across the state and occasionally locally common, but in 2021 they were only reported from Ludlow, North Reading and the usual stronghold of the Mystic Lakes.

American Copper reports were common and widespread across the state from late April through late October, while Bog Copper was reported from six locations. Seven of eight Bronze Copper reports were from Ipswich or Concord. There were none from farther west than that. There were only four reports of Acadian Hairstreak, three from a military base in Sandwich, and the fourth from the other end of the state, in Berkshire County. The handful of Coral Hairstreak records reached from Northern Berkshire Co. to Brewster on the Cape. Except for single reports from Lexington and Boston, Edwards Hairstreak was reported from Plymouth and the Cape. Striped Hairstreak was reported in scattered places from Lanesboro to Dartmouth. Both versions of Frosted Elfin emerged at the end of April and flew into late May, and reports were about as usual for both: those feeding on *Baptisia* were relatively wide-

spread in the east, while the lupine feeders continue to be reported from just a couple sites in the CRV. Bog Elfin was reported from Worcester Co. once in 2021. Brown Elfin were on the wing from early April in Plymouth, and Plymouth posted the best numbers through the flight period, with other good reports from Montague, Truro, and Woburn. Henry's Elfin reports were centered on the Newbury/Woburn/Milton areas, with outliers from Petersham and Easton. Hoary Elfin reports were, as usual, limited to Plymouth, Harwich, and MV.

In addition to the species' stronghold in the southeast, Red-banded Hairstreak seems to have established itself in Franklin Park in Boston, and was also seen in Westwood, Dedham, and Marion. There were two reports of Hickory Hairstreak, both from Berkshire Co. 4J counts. One Southern "Oak" Hairstreak was reported, from Bourne on July 10. Eleven White-M Hairstreak records came in, almost all from the southeast area. Hessel's Hairstreak was unreported, and Juniper Hairstreak was reported seventeen times, but almost all of the reports were either from Horn Pond Mountain in Woburn or the usual spots in Holyoke. Gray Hairstreaks popped out beginning in mid-April and were reported regularly, but usually in ones and twos, from then on until the last sighting in early October. Early Hairstreak had three sightings in 2021, all from the Berkshires and all on the same day.

Spring Azure started gladdening hearts at the end of March, and was well reported through April and May and into early June. Eight of ten Cherry Gall Azure reports were from Worcester County east, including two from Martha's Vineyard, mostly in May. Twenty-seven Silvery Blue reports ranged from Newbury to Windsor, with a high of 27 individuals in Stowe on May 28.

## BRUSHFOOTED BUTTERFLIES

A Gulf Fritillary was definitively photographed in Falmouth. Variegated Fritillary was reported seven times, from Sheffield, Northampton (3x), Sunderland, and Westport (2x), and from late July into early October. Great Spangled Fritillary did reasonable well in the western two thirds of the state, but was absent from the southeast. Aphrodite Fritillary reports dropped to six in 2021, all from the CRV westward. There were only two reports of Atlantis Fritillary, both from the Berkshires. Nineteen reports of Silver-bordered Fritillary came in, spread out from Washington to West Bridgewater to Ipswich. Only three reports of Meadow Fritillary were received in 2021, all from the CRV west. Harris' Checkerspot was once again limited to three reports from

the Worcester/Shrewsbury area in early July. Baltimore Checkerspot reports were more evenly balanced between east and west this year, with several good showings in the western 4J counts. Eastern Comma had a disappointing year, and Question Mark also was abroad in ones and twos. There were only two reports for Gray Comma, one each from Washington and Spencer. Six Compton Tortoiseshell reports came in, stretching from Williamstown to Plymouth. Mourning Cloak started flying on March 10, and except for a pause in the second half of June, were reported until October 16. A large majority of Mourning Cloak sightings were from March to the end of May, when they were found in ones and twos across the state. Only two Milbert's Tortoiseshell were reported, from Whately and Lanesboro. Neither of the Ladies had large years in 2021. American Ladies flew from early April through November 11th, but for the most part in small numbers and in the eastern half of the state, and Painted Ladies showed up in ones and twos again, and all in the eastern half of the state. Except for two July reports from Sheffield and the Cen. Franklin Co. 4J count, all sightings for Common Buckeye came from near the coast, and the bulk of them were from the Dartmouth area in September. There was no widespread flight in 2021.

Viceroy was around in the usual places and numbers from late May to the middle of October, while Hackberry Emperor was reported only once, from Springfield in late August. Tawny Emperor was reported once, from Sheffield in July. Northern Pearly-eye was reported mostly from northern Worcester Co. westward. Appalachian Brown was fairly well reported, from early June in Longmeadow to early August in Petersham, with reports scattered across the state from far Berkshire Co. to Plymouth and Mattapoisett. Eyed Brown had nine reports, from No. Berkshire Co. to the Blackstone Valley. Little Wood-Satyr flew from late May through the end of July, with no real gap, date-wise, between the two varieties, but were only reported twice from Berkshire Co., on the South and the North Berkshire 4J counts. Com. Ringlet was very well reported across the state from mid-May until mid-October, and Wood-Nymph reports were about average starting at the end of June and continuing until mid-September. Monarchs reports started on May 9th in Westport and built through the summer, and the last was from November 13 in Salisbury. Monarchs did seem to be everywhere, and occasionally in large numbers like in Westport at the start of October, but it was far from the kind of blockbuster year we'd really like to see heading for Mexico from our area.

## SKIPPER

There were five Long-tailed Skipper reports in 2021, a marginal increase from four in 2020. The first was in mid-July, with the last in late October, and all from the eastern part of the state. Reports of Hoary Edge were down sharply, from 15 in 2020 to 7 in 2021, and all of the reports came either from Worcester or the Montague area. Southern Cloudywing was only reported four times, from early June through early July, whereas Northern Cloudywing were reported 16 times, from late May into early July, and were also widespread outside of Berkshire Co.. Juvenal's Duskywings were well reported from mid-April through mid-June, mostly from the hardwood forest/often sandy soil areas they prefer so much. Dreamy Duskywing were only reported seven times, with reports scattered from Plymouth to Williamsburg, and early May into early June. Sleepy Duskywing was reported eight times, all from the south-east, Cape, and Martha's Vineyard. Wild Indigo Duskywing was well reported from mid-May to the start of October, but not from Berkshire Co.; all reports were from the CRV eastward. There was one report of Common Checkered Skipper, May 1 in Shrewsbury. Most of the eleven reports of Common Sootywing were from the CRV.

Seven of the eight Arctic Skipper reports were from Windsor, with the other being from Becket. The species is certainly more widespread than that, but is easily overlooked. Least Skipper was well and widely reported from early June in Falmouth to early October in Ipswich. Fiery Skipper was reported 10 times in 2021, and once again all sightings save one were from the eastern part of the state, with the NCG hosting one at the start of October.

Again in 2021, only seven Leonard's Skipper reports came in, with all from Worcester Co. eastward. Cobweb Skipper was reported only five times, and again only from Montague and Martha's Vineyard, all in May. Indian Skipper had eight reports, with the first report on May 23rd also being the largest- 27 on Martha's Vineyard. Peck's Skipper was fairly well and widely reported, and Long Dash was reported into mid-July, then with three second brood records in mid-September. Zabulon Skipper has become fairly common and widespread in two flights everywhere east of Berkshire Co. Hobomok Skipper maintains a presence in the Berkshires, but reports for this species have become somewhat uncommon everywhere in the state. The handful of Broad-winged Skipper reports were mostly from the eastern half of the state, with only one from Berkshire Co. Dion Skipper was only reported twice, and only from Berkshire Co.; the colony in Northampton avoided

detection in 2021, while Two-spotted Skipper was reported just twice, both in late June in Berkshire Co. Pepper and Salt Skipper reports were up somewhat in 2021, mostly from the Berkshires, but also from such far-flung places as Raynham and Newbury. Sachem reports were mostly from the Dartmouth area, with one late season report from the Newbury. Ocola Skipper was found mostly in the southeast, but also turned up as far afield as Newbury, Holliston, Concord, Medfield and Northampton, where it wouldn't be a proper year if at least one didn't turn up in the Gagnon Plots.

**Abbreviations:** AP-Allen's Pond; BFD-Barre Falls Dam; BMB-Broad Meadow Brook, CG-Community Gardens; CRP-Charles River Peninsula; CRV-Connecticut River Valley; CST-Crane Swamp Trail; EQLT-East Quabbin Land Trust; F&G-Fish & Game; FPB-Fort Pond Brook; FS-Fannie Stebbins Wildlife Sanctuary; GBH-Great Blue Hill; GM-Great Meadows NWR; GITW-Garden in the Woods; HPM-Horn Pond Mountain; IBA-Important Bird Area; IRP-Ipswich River Park; IRWS-Ipswich River Wildlife Sanctuary; LA-Larz Anderson Park; LPWS-Long Pasture Wildlife Sanctuary; MAS-Mass Audubon Sanctuary; MCRT-Massachusetts Central Rail Trail; MBWMA-Martin Burns WMA; MHF-Moose Hill Farm; ML-Mystic Lakes; MMP-Mountain Meadow Preserve; MPRA-Mill Pond Recreational Area; MSSF-Myles Standish State Forest; MV-Martha's Vineyard; NABA 4JC-North American Butterfly Association 4th of July Count; NAC-Nine Acre Corner; NCG-Northampton Community Gardens; NCM-North Common Meadows TTOR; NP-Newburyport; NRT-Norwottuck Rail Trail; NWR-National Wildlife Refuge; PL-Power Line; PRN-WR-Parker River NWR; Res.-Reservoir or Reservation; RM-Rumney Marsh; S-C - Stevens-Coolidge TTOR; SF-State Forest; SP-State Park; TTOR-The Trustees of Reservations; WMA-Wildlife Management Area; WMWS-Wachusett Meadow Wildlife Sanctuary; WRR-Waskosim Rock Res.



Spicebush Swallowtail (*Papilio troilus*) caterpillar, 8/18/21, Haydenville, MA, Bill Callahan. His final photo.



Baltimore Checkerspot (*Euphydras phaeton*) caterpillar, 7/5/21, Grafton, MA, Linda Graetz

## Pipevine Swallowtail

8/4 1 Bart's Cobble, Sheffield - Jeremy Coleman

## Zebra Swallowtail

7/8 1 Huntington - Kathleen Mahoney

## Black Swallowtail

4/19 1 Conte NWR, Hadley - Elise & Karl Barry

4/21 1 Franklin Park, Boston - Stephen Baird

5/2 3 GBH, Canton - Matt Arey

5/14 1 Northampton - Allyn Gieryk

5/18 10 Westborough - Steve Moore, Barbara Volkle

7/18 13 Northampton NABA - Mark Fairbrother *et al.*

7/23 1 Pembroke - David Daly

7/28 1 Holliston - Richard Hildreth

8/6 5 Hardwick - Mark Lynch, Sheila Carroll

8/15 3 Ashburnham - MBC trip

8/25 4 Northampton CG - Garry & Annie Kessler

9/4 1 Adams Farm, W. Bridgewater - Don Adams

9/11 2 Dartmouth - Matt Arey

9/20 1 Hardwick, Mandell Hill EQLT - Wendy Howes, Alan Rawle

9/27 3 Middleton - Marjorie Watson

10/20 1 Arlington Heights - Lisa Wolfe

## Giant Swallowtail

5/23 1 Lime Kiln, Sheffield - Bill & Nancy Callahan

5/27 1 MBWMA, Newbury - Matt Arey

7/20 1 Williamstown - Pam Weatherbee

7/20 1 Granville - Dorrie Holmes

7/25 1 Bart's Cobble, Sheffield - Gael Hurley

8/4 2 Bart's Cobble, Sheffield - Jeremy Coleman

8/16 1 Williamstown - Pam Weatherbee

8/18 2 Arlington Heights - Lisa Wolfe

8/24 1 Arlington Heights - Lisa Wolfe

8/31 1 Amherst - Josh Rose

9/7 2 Arlington Heights - Lisa Wolfe

## Tiger Swallowtail (spp)

4/20 1 HPM, Woburn - MBC Trip

5/2 1 HPM, Woburn - MBC Trip

5/10 2 Attleboro - Melanie Vincelette

6/5 14 Windsor - Bill & Cara Callahan

6/6 48 North Adams, Mt. Greylock State Res. - MBC Trip

6/16 1 West Whately - Bill Benner

6/20 1 Williamstown - Pam Weatherbee

7/16 1 Hatfield - Allyn Gieryk

7/23 2 E Longmeadow - Deborah Bentley

7/28 1 Belmont - Fred Bouchard

8/7 2 Belmont - Fred Bouchard

8/16 8 Clarksburg - Suzanne Reynard

8/26 1 Westport - Annie Cloutier

8/31 2 Adams Farm, W. Bridgewater - Don Adams

## Eastern Tiger Swallowtail

4/24 1 Burrage Pond, Hanson - Andrew Griffith

5/2 1 Noquochoke Reserve, Dartmouth - Andrew Griffith

5/7 2 Holliston - Richard Hildreth

5/11 2 MBWMA, Newbury - Marjorie Watson

5/11 1 Provincetown - Stanley Selkow

5/14 2 Little Mount Tom, Holyoke - Bill Callahan

5/23 19 Ware River Watershed - Mark Lynch, Sheila Carroll

5/26 1 Bullitt TTOR, Ashfield - Bill Callahan

5/27 16 Otter River SF, Winchendon - Mark Lynch, Sheila Carroll

6/8 6 Moran WMA, Windsor - Bill Callahan

6/20 7 Erving - Mark Lynch, Sheila Carroll

7/4 9 N Berkshire NABA - Tom Tynning *et al.*

7/5 9 C Franklin NABA - Mark Fairbrother *et al.*

7/15 1 Rowden Yard, Leicester - Mark Rowden

7/20 3 MMP, Williamstown - Bo Zaremba

7/24 2 Bachelor Brook/Stony Brook CA - MBC Trip

7/31 3 Grafton - Dolores Price, Marvin St. Onge

8/4 1 Bart's Cobble, Sheffield - Jeremy Coleman

8/15 3 MHF, Sharon - Erik Nielsen

8/21 2 Holliston - Richard Hildreth

9/4 1 Sylvan Nursery, Dartmouth - MBC Trip

9/15 1 Mt. Greylock SR, Lanesborough - Gael Hurley

9/20 1 Arnold Arboretum, Boston - Lucy Merrill-Hills

10/16 1 Arlington Heights - Lisa Wolfe

## Canadian Tiger Swallowtail

5/6 1 Montague - Bill & Nancy Callahan

5/7 1 Shrewsbury - Bruce de Graaf

5/12 1 Montague Plains - Bill Callahan

5/15 11 Petersham - Mark Lynch, Sheila Carroll

5/22 1 Windsor - Bill Callahan

5/24 1 Ashburnham - Karl & Elise Barry, Sue Cloutier

5/27 6 North Adams, Mt. Greylock State Res. - Mark Rosenstein

5/28 1 Shrewsbury - Bruce de Graaf

6/1 7 Mt. Greylock SR, Lanesborough - Mark Rosenstein

6/1 2 Moran WMA, Windsor - Bill Callahan

6/2 1 Montague Plains - Jeremy Coleman



- 6/2 3 North Adams, Mt. Greylock State Res. --  
Bill & Nancy Callahan  
6/3 1 Shutesbury - Garrett Simonsen  
6/6 6 Berkshire County - Gael Hurley  
6/7 1 Windsor - Michael Newton  
6/12 1 Dunstable - Mitzi Gauthier  
6/16 4 Washington - Gael Hurley  
7/4 1 N Berkshire NABA - Tom Tynning *et al.*  
7/5 3 C Franklin NABA - Mark Fairbrother  
*et al.*

### Spicebush Swallowtail

- 5/12 1 Franklin - Keith Shaw  
5/15 1 Westport - Lauren Miller-Donnelly  
5/22 2 Westborough - Michael Newton  
5/26 1 New Braintree - Mark Lynch, Sheila  
Carroll  
6/2 1 Becket - Gael Hurley  
6/29 3 Crane WMA, Falmouth - Andrew  
Griffith  
7/4 3 N Berkshire NABA - Tom Tynning *et al.*  
7/5 5 C Franklin NABA - Mark Fairbrother  
*et al.*  
7/5 6 Thompson Fields, Harwich - Joe Dwelly  
8/7 2 West Whately - Bill Benner  
8/15 10 Nasketucket Bay Reserve,  
Mattapoisett - MBC Trip  
8/15 1 Washington - Gael Hurley  
8/15 2 MHF, Sharon - Erik Nielsen  
8/21 1 Holliston - Richard Hildreth  
8/31 1 Grafton - Price, Miller, St. Onge  
9/11 1 Wellfleet Bay Ws, Wellfleet - Erin  
Ellingwood

### Mustard White

- 5/6 2 Canoe Meadows, Pittsfield - Garry  
Kessler  
5/7 7 Windsor - Bill & Nancy Callahan  
5/17 1 Windsor - Bill & Nancy Callahan  
5/22 4 Windsor - Bill Callahan  
6/1 1 Windsor - Bill Callahan  
6/5 1 Windsor - Bill & Cara Callahan

### West Virginia White

- 4/28 1 Sunderland - Barry, Barry, and Cloutier  
4/28 5 Pittsfield SF - Gael Hurley  
5/6 3 Reservoir Rd, Sunderland - Bill &  
Nancy Callahan  
5/27 1 North Adams, Mt. Greylock State  
Res. - Mark Rosenstein  
6/1 4 Mt. Greylock SR, Lanesborough - Mark  
Rosenstein  
6/2 1 North Adams, Mt. Greylock State Res. -  
Bill & Nancy Callahan  
6/3 1 Mt. Greylock SR, Lanesborough -  
Jonathan Pierce  
6/6 1 North Adams, Mt. Greylock State Res. -  
Andrew Griffith

### Cabbage White

- 3/27 1 Stichter Yard, Newbury - Sharon  
Stichter  
3/30 1 Easton - Nick Block  
4/6 5 Boston Nature Center - Lucy  
Merrill-Hills  
4/7 1 Sunderland - Bill & Nancy Callahan  
4/9 3 Sheffield - Jonathan Pierce  
4/10 8 Holliston - Richard Hildreth  
4/27 17 Adams Farm, W. Bridgewater - Don  
Adams  
4/28 6 Arcadia WS, Easthampton - Bill  
Callahan  
5/3 22 Arnold Arboretum, Boston - Lucy  
Merrill-Hills  
5/6 3 Little Mount Tom, Holyoke - Bill  
Callahan  
5/17 13 Boston Nature Center - Lucy  
Merrill-Hills  
5/23 24 MV - Matt Pelikan  
6/13 56 Boston Nature Center - Lucy  
Merrill-Hills  
6/18 1 Wendell - Mark Lynch, Sheila Carroll  
6/20 2 Williamstown - Pam Weatherbee  
6/24 14 Hardwick - Mark Lynch, Sheila  
Carroll  
6/26 82 N Essex NABA - Mark Rosenstein  
*et al.*  
7/4 63 N Berkshire NABA - Tom Tynning *et al.*  
7/5 332 N Worcester NABA - Wendy Howes  
*et al.*  
7/18 177 Northampton NABA - Mark  
Fairbrother *et al.*  
7/24 49 Rock Meadow, Belmont - Fred  
Bouchard  
7/26 108 Brewster NABA - Joe Dwelly *et al.*  
8/7 15 DWWS, Marshfield - Doug Hlousek  
8/21 75 Hatfield, Black Birch Vineyard - Mark  
Fairbrother  
9/2 16 Holliston - Richard Hildreth  
9/4 15 Adams Farm, W. Bridgewater - Don  
Adams  
9/10 30 Rock Meadow, Belmont - Fred  
Bouchard  
9/19 44 Boston Nature Center - Lucy  
Merrill-Hills  
9/25 200 Appleton Farms, Ipswich - MBC Trip  
10/1 50 Northampton CG - Steve Moore,  
Barbara Volkle  
10/16 10 Holliston - Richard Hildreth  
10/21 8 Northampton CG - Tom Murray  
11/1 2 Plum Island, Newbury - Marjorie  
Watson  
11/10 2 Nahant - Linda Pivacek  
11/13 1 Roslindale, Boston - Lucy Merrill-Hills

## Clouded Sulphur

- 4/9 1 Natick - Michael Newton  
4/21 1 Brookfield - Marvin St. Onge  
5/3 2 FS WMA, Longmeadow - Bill & Nancy Callahan  
5/13 41 McDonald Nature Preserve, Wilbraham - Bill & Nancy Callahan  
5/23 10 Lime Kiln, Sheffield - Bill & Nancy Callahan  
6/1 3 Moran WMA, Windsor - Mark Rosenstein  
6/26 9 N Essex NABA - Mark Rosenstein *et al.*  
7/4 22 N Berkshire NABA - Tom Tynning *et al.*  
7/5 126 C Franklin NABA - Mark Fairbrother *et al.*  
7/5 82 N Worcester NABA - Wendy Howes *et al.*  
7/11 45 Concord NABA - John Shetterly *et al.*  
7/11 40 C Berkshire NABA - Tom Tynning *et al.*  
7/24 24 Adams Farm, Walpole - Walt Webb  
8/15 30 MHF, Sharon - Erik Nielsen  
8/21 30 North Road, Whately - Mark Fairbrother  
9/4 22 Whately - Elise & Karl Barry  
9/11 62 AP Allens Neck, Dartmouth - Lauren Miller-Donnelly  
9/19 42 Worcester Airport - Mark Lynch, Sheila Carroll  
10/7 300 Williamstown - Dolores Price, Marvin St. Onge  
10/16 15 Plum Island, Newbury - Matt Arey  
10/21 2 Northampton CG - Tom Murray  
10/24 1 Boston Nature Center - Lucy Merrill-Hills  
10/31 1 Daheny Park, Cambridge - Fred Bouchard  
12/17 1 Crane WMA, Falmouth - Serge Matheny

## Orange Sulphur

- 5/1 1 Crane WMA, Falmouth - Joe Dwelly  
5/13 1 McDonald Nature Preserve, Wilbraham - Bill & Nancy Callahan  
5/27 2 McDonald Nature Preserve, Wilbraham - Bill Callahan  
6/6 1 Southwick WMA - Mark Fairbrother  
6/19 1 Millenium Park, Roxbury - Lucy Merrill-Hills  
7/5 6 N Worcester NABA - Wendy Howes *et al.*  
7/11 15 Concord NABA - John Shetterly *et al.*  
7/15 41 LPWS, Barnstable - Joe Dwelly  
7/18 11 Northampton NABA - Mark Fairbrother *et al.*  
7/26 9 Brewster NABA - Joe Dwelly *et al.*  
8/9 2 WMWMA, New Braintree - Wendy Howes, Alan Rawle

- 8/15 1 Ashburnham - MBC trip  
8/21 12 North Road, Whately - Mark Fairbrother  
8/29 1 Muddy Brook WMA, Hardwick - Wendy Howes, Alan Rawle  
9/4 1 Whately - Elise & Karl Barry  
9/11 17 AP Allens Neck, Dartmouth - Lauren Miller-Donnelly  
9/14 13 Millenium Park, Roxbury - Lucy Merrill-Hills  
9/26 20 Helfand Community Gardens, Dartmouth - Andrew Griffith  
10/6 2 Lexington - Fred Bouchard  
10/18 28 Bear Creek WS, Saugus - Erin Ellingwood  
11/5 1 Nahant - Linda Pivacek  
11/11 1 Arnold Arboretum, Boston - Lucy Merrill-Hills  
11/13 4 Salisbury - Dawn Vesey

## Cloudless Sulphur

- 8/29 1 Adams Farm, W. Bridgewater - Don Adams  
9/4 1 AP Allens Neck, Dartmouth - MBC Trip  
9/6 1 Wareham, MAS Great Neck WS - Andrew Griffith  
9/6 1 Bayberry Hills PL-Bike Path, Yarmouth - Joe Dwelly  
9/8 1 Wareham - Andrew Griffith  
9/11 1 AP Allens Neck, Dartmouth - Lauren Miller-Donnelly  
9/14 1 East Harwich - Mark Faherty  
9/15 1 Edgartown - Matt Pelikan  
9/18 1 Oak Bluffs - Matt Pelikan  
9/27 1 Wellfleet Bay Ws, Wellfleet - Mark Faherty  
10/1 1 Westport - Tom Murray  
10/1 2 Allens Pond Wildlife Sanctuary, Dartmouth - Tom Murray  
10/14 1 Gooseberry Neck, Westport - Tom Dodd  
10/16 1 Plum Island, Newbury - Matt Arey

## Harvester

- 5/17 1 Ludlow - Danielle  
6/13 3 Mystic Lakes, Medford - Renee LaFontaine  
7/19 11 Mystic Lakes, Medford - Renee LaFontaine  
8/7 32 Mystic Lakes, Medford - Kessler, Newton, LaFontaine  
8/13 1 N Reading - Roy Evans  
8/20 2 N Reading - Linda Ireland  
9/13 12 Mystic Lakes, Medford - Renee LaFontaine  
9/19 1 Ipswich, New England Biolabs - Garry Kessler

9/26 1 Mystic Lakes, Medford - Renee LaFontaine

### **American Copper**

4/24 1 Fall River - Doug Hlousek  
5/1 4 Little Mount Tom, Holyoke - Bill & Nancy Callahan  
5/2 1 Stichter Yard, Newbury - Sharon Stichter  
5/12 1 Stonehill College, Easton - Nick Block  
5/17 50 Brewster - Stanley Selkow  
5/22 3 Westborough - Michael Newton  
5/26 3 Scarborough Brook CA, Belchertown - Karl & Elise Barry  
6/2 6 Montague Plains - Jeremy Coleman  
6/11 1 Gill - Bill & Nancy Callahan  
6/26 1 Montague Plains - Rosemary Mosco  
7/5 113 C Franklin NABA - Mark Fairbrother *et al.*  
7/5 111 N Worcester NABA - Wendy Howes *et al.*  
7/11 29 Concord NABA - John Shetterly *et al.*  
7/17 15 Falmouth NABA - Joe Dwelly *et al.*  
9/6 30 Wareham, MAS Great Neck WS - Andrew Griffith  
9/11 1 Wellfleet Bay Ws, Wellfleet - Erin Ellingwood  
9/18 3 Oak Bluffs - Matt Pelikan  
9/23 4 Danvers Meadow, Danvers - Lucy Merrill-Hills  
9/27 12 Wareham - Andrew Griffith  
10/2 12 Appleton Farms, Ipswich - Matt Arey  
10/19 1 Squibnocket, Chilmark - Tom Dodd  
10/21 1 Northampton CG - Tom Murray  
10/24 1 Arnold Arboretum, Boston - Lucy Merrill-Hills

### **Bronze Copper**

6/12 2 GMNWR, Concord - Rosemary Mosco  
6/26 1 N Essex NABA - Mark Rosenstein *et al.*  
9/19 3 Appleton Farms, Ipswich - Garry Kessler  
9/25 4 Appleton Farms, Ipswich - Matt Arey  
9/25 1 GMNWR, Concord - Rosemary Mosco  
9/25 1 Verrill Farm, Concord - Rosemary Mosco  
10/2 1 Appleton Farms, Ipswich - Matt Arey

### **Bog Copper**

7/5 2 Townsend, Elm Circle WMA - Tom Murray  
7/5 1793 C Franklin NABA - Mark Fairbrother *et al.*  
7/7 4 Shutesbury - Jeremy Coleman

### **Coral Hairstreak**

7/11 1 Hatches Harbor, Provincetown - Tor Hansen  
6/26 1 Ware - Bill Callahan  
6/30 2 HPM, Woburn - Mark Rosenstein

7/4 21 N Berkshire NABA - Tom Tynning *et al.*  
7/4 8 Shrewsbury - Garry Kessler  
7/5 6 Noquochoke Reserve, Dartmouth - Andrew Griffith  
7/5 3 C Franklin NABA - Mark Fairbrother *et al.*  
7/5 2 Thompson Fields, Harwich - Joe Dwelly  
7/6 3 Great Meadows, Lexington - Mark Rosenstein, Rosemary Mosco  
7/6 2 Noquochoke Reserve, Dartmouth - Garry Kessler  
7/11 5 C Berkshire NABA - Tom Tynning *et al.*  
7/11 1 World's End, Hingham - Garry Kessler  
7/11 1 MSSF, Plymouth - Andrew Griffith  
7/11 3 Blackstone Valley NABA - Tom Dodd *et al.*  
7/16 1 HPM, Woburn - Garry Kessler  
7/20 1 Peaked Mt., Monson - Erin Haugh  
7/22 3 East Harwich - Larry Barry  
7/26 6 Brewster NABA - Joe Dwelly *et al.*

### **Acadian Hairstreak**

6/28 3 Sandwich - Peter Trimble  
7/5 2 Sandwich - Garry Kessler  
7/10 4 Sandwich - Peter Trimble  
7/20 1 Williamstown - Bo Zaremba

### **Edwards' Hairstreak**

6/23 1 MSSF, Plymouth - Andrew Griffith  
6/27 3 MSSF, Plymouth - Andrew Griffith  
6/29 1 Crane WMA, Falmouth - Andrew Griffith  
7/5 1 Franklin Park, Boston - Stephan Baird  
7/5 1 Thompson Fields, Harwich - Joe Dwelly  
7/6 100 MSSF, Plymouth - Andrew Griffith  
7/6 12 Great Meadows, Lexington - Mark Rosenstein, Rosemary Mosco  
7/11 20 MSSF, Plymouth - Andrew Griffith  
7/15 3 Crane WMA, Falmouth - Andrew Griffith

### **Banded Hairstreak**

6/20 30 Sherborn - Michael Newton  
6/23 2 G46 Quabbin - Wendy Howes  
6/23 2 Rowden Yard, Leicester - Mark Rowden  
6/26 6 Montague Plains - Rosemary Mosco  
6/29 3 Shrewsbury - Bruce de Graaf  
7/4 9 N Berkshire NABA - Tom Tynning *et al.*  
7/5 8 C Franklin NABA - Mark Fairbrother *et al.*  
7/7 1 Lanesborough - Gael Hurley  
7/10 1 Ashfield - Bill Benner, Joe Wicinski  
7/11 6 MSSF, Plymouth - Andrew Griffith  
7/14 1 New Salem - Sue Cloutier  
7/15 3 Crane WMA, Falmouth - Andrew Griffith  
7/24 1 Rowden Yard, Leicester - Mark Rowden  
7/30 1 West Whately - Bill Benner

## Hickory Hairstreak

- 7/2 1 S Berkshire NABA - Rene Wendell *et al.*  
7/4 2 N Berkshire NABA - Tom Tynning *et al.*

## Striped Hairstreak

- 7/4 6 N Berkshire NABA - Tom Tynning *et al.*  
7/5 1 Dauphinais Park, Grafton - Dolores Price, Marvin St. Onge  
7/5 1 C Franklin NABA - Mark Fairbrother *et al.*  
7/5 50 Noquochoke Reserve, Dartmouth - Andrew Griffith  
7/7 1 Lanesborough - Gael Hurley  
7/11 3 MSSF, Plymouth - Andrew Griffith  
7/20 1 East Wareham - Laura Sayward  
8/2 1 Wareham, MAS Great Neck WS - Andrew Griffith  
8/29 1 MSSF, Plymouth - Matt Arey

## Oak Hairstreak

- 7/10 2 Bourne - Garry Kessler

## Brown Elfin

- 4/9 1 MSSF, Plymouth - Andrew Griffith  
4/14 15 G22 Quabbin - Sue Cloutier  
4/20 7 HPM, Woburn - MBC Trip  
4/24 31 Pilgrim Heights, Truro - Joe Dwelly  
5/1 75 MSSF, Plymouth - MBC Trip  
5/2 10 HPM, Woburn - MBC Trip  
5/6 12 Grafton - Dolores Price, Marvin St. Onge  
5/11 1 Provincetown - Stanley Selkow  
5/15 20 MSSF, Plymouth - Andrew Griffith  
5/16 3 Montague Plains - Bill Callahan  
5/24 1 Ashburnham - Karl & Elise Barry, Sue Cloutier  
5/24 3 MSSF, Plymouth - Andrew Griffith

## Hoary Elfin

- 4/20 2 Thompson Fields, Harwich - Joe Dwelly  
4/24 12 Correllus State Forest, Edgartown - Matt Pelikan  
4/24 5 MSSF, Plymouth - Garry & Annie Kessler  
5/1 12 MSSF, Plymouth - MBC Trip  
5/11 15 MSSF, Plymouth - Bill & Nancy Callahan  
5/14 2 Thompson Fields, Harwich - Joe Dwelly  
5/15 2 MSSF, Plymouth - Andrew Griffith

## Frosted Elfin

- 4/28 5 Barnes Airport, Westfield - Bill Callahan  
5/1 1 MSSF, Plymouth - MBC Trip  
5/8 6 Florence - Bill Callahan  
5/9 12 MSSF, Plymouth - Andrew Griffith  
5/13 3 Sharon - Rachael Bonoan  
5/14 3 Florence - Bill Callahan  
5/18 8 Lamson Rd, Foxborough - Champagne, Bonoan & Dunne

- 5/19 7 Florence - Bill Callahan  
5/24 3 MSSF, Plymouth - Andrew Griffith  
5/26 13 Lamson Rd, Foxborough - Rachael Bonoan

## Henry's Elfin

- 4/8 1 Burma Road, Milton - Lucy Merrill-Hills  
4/13 6 Natick - Garry Kessler  
4/24 8 Burma Road, Milton - Lucy Merrill-Hills  
5/2 2 GBH, Canton - Matt Arey  
5/2 8 Burma Road, Milton - Lucy Merrill-Hills  
5/2 6 Great Meadow, Arlington - MBC Trip  
5/11 1 Plum Island, Newbury - Marjorie Watson  
5/12 2 Easton - Nick Block  
5/15 1 Petersham - Mark Lynch, Sheila Carroll

## Bog Elfin

- 5/24 2 Worcester Co. - Karl & Elise Barry, Sue Cloutier

## Eastern Pine Elfin

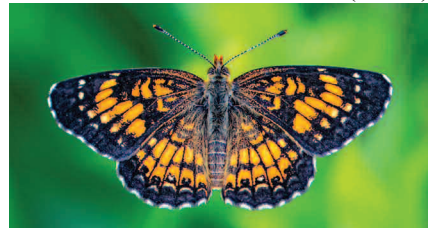
- 4/4 1 MBWMA, Newbury - Bo Zaremba  
4/9 2 Belchertown - Josh Rose  
4/10 4 Grafton - Dolores Price, Marvin St. Onge  
4/14 6 HPM, Woburn - Matt Arey  
4/24 6 Correllus State Forest, Edgartown - Matt Pelikan  
4/24 3 Pilgrim Heights, Truro - Joe Dwelly  
5/1 20 MSSF, Plymouth - MBC Trip  
5/2 25 Noquochoke Reserve, Dartmouth - Andrew Griffith  
5/9 3 Lamson Rd, Foxborough - Madeline Champagne  
5/11 36 MSSF, Plymouth - Bill & Nancy Callahan  
5/13 2 Holliston - Richard Hildreth  
5/14 1 New Salem - Dave Small  
5/19 1 Pittsfield - Gael Hurley  
5/20 4 Montague Plains - Bill & Nancy Callahan  
5/20 1 Natick - Greg Dysart  
5/23 1 Bart's Cobble, Sheffield - Bill & Nancy Callahan  
5/24 2 MSSF, Plymouth - Andrew Griffith  
5/24 1 Pikes Bridge Rd, Newbury - Marjorie Watson  
6/5 1 Ware River Watershed - Mark Lynch, Sheila Carroll  
6/27 1 MSSF, Plymouth - Andrew Griffith
- ## Juniper Hairstreak
- 4/14 3 HPM, Woburn - Matt Arey  
4/20 2 HPM, Woburn - Garry & Annie Kessler  
5/2 1 GBH, Canton - Matt Arey

# Mourning Cloak Life Cycle



Tor Hansen

Harris's Checkerspot (*Chlosyne harrisi*), 6/6/21, Shrewsbury, MA,  
Bruce deGraaf (below)



Variegated Fritillary (*Euptoieta claudia*), 8/27/21, Northampton, MA,  
Jeremy Coleman (left)

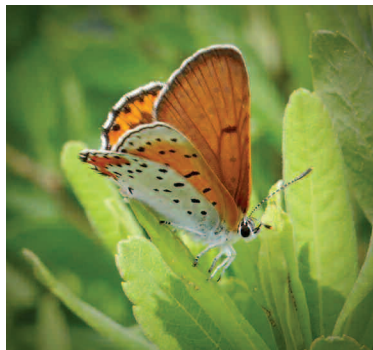
Acadian  
Hairstreak  
(*Satyrium  
acadica*), 7/5/21,  
Sandwich, MA,  
Garry Kessler





Harvester (*Feniseca tarquinius*), 8/7/21, Medford, MA, Garry Kessler

Silvery Blue (*Glaucopsyche lygdamus*), 5/8/21, Groton, MA, Tom Murray



Bronze Copper (*Lycaena hylus*), 7/10/21, Carlisle, MA, Linda Graetz



Eastern Tailed-Blue (*Everes comyntas*), 5/10/21, West Bridgewater, MA, Don Adams

Juniper Hairstreak (*Callophrys gryneus*), 5/6/21. Holyoke, MA, Bill Callahan



Brown Elfin (*Callophrys augustinus*), 4/24/21, Shrewsbury, MA, Bruce deGraaf



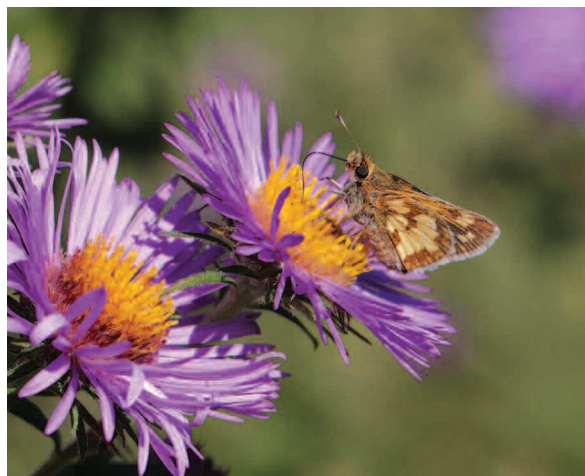


Delaware Skipper (*Anatrytone logan*),  
7/5/21, Sterling, MA, Alan Rawle



Mulberry Wings (*Poanes massasoit*),  
7/21/21, Washington, MA, Bo Zarembo

Peck's Skipper  
(*Polites peckius*),  
9/6/21,  
Lincoln, MA,  
Linda Graetz



Long Dash  
(*Polites mystic*),  
6/11/21,  
Shrewsbury, MA,  
Bruce deGraaf



Red-spotted Admiral (*Limenitis arthemis*), 6/24/21, Plymouth, MA, Andrew Griffith



Banded Hairstreak (*Satyrium calanus*), 6/29/21, Williamstown, MA, Pam Weatherbee



Coral Hairstreak (*Satyrium titus*), 6/24/21, Chocorua, NH, Linda Graetz

Eastern Tailed-Blue, aberrant form (*Everes comyntas*), 7/10/21, Bourne, MA, Andrew Griffith



Common Buckeye (*Junonia coenia*), 9/11/21, South Dartmouth, MA, Michael Newton



5/6 1 Little Mount Tom, Holyoke - Bill & Nancy Callahan  
5/21 6 Little Mount Tom, Holyoke - MBC Trip  
5/27 1 MBWMA, Newbury - Matt Arey  
7/14 4 HPM, Woburn - Garry Kessler  
7/20 3 HPM, Woburn - Mark Rosenstein  
7/26 1 Brewster NABA - Joe Dwelly *et al.*

### **White M Hairstreak**

7/30 1 Berkley - Tom Dodd  
8/12 1 Westport - Tom Dodd  
8/15 5 Nasketucket Bay Reserve, Mattapoissett - MBC Trip  
8/29 1 MSSF, Plymouth - Matt Arey  
9/4 4 AP Allens Neck, Dartmouth - MBC Trip  
9/6 1 Dunstable - Tom Murray  
9/10 1 Sylvan Nursery, Dartmouth - Andrew Griffith  
9/11 3 AP Allens Neck, Dartmouth - Lauren Miller-Donnelly  
9/19 1 Lakeville - Sally Spooner  
9/25 1 Castle Hill, Ipswich - Matt Arey

### **Gray Hairstreak**

4/14 1 HPM, Woburn - Matt Arey  
4/24 1 Correllus State Forest, Edgartown - Matt Pelikan  
4/28 1 Holliston - Richard Hildreth  
5/9 2 Brewster - Larry Barry  
5/17 1 Lamson Rd, Foxborough - Mark Rosenstein  
5/24 1 Borden Colony, Raynham - Joe Dwelly  
6/26 1 N Essex NABA - Mark Rosenstein *et al.*  
7/5 2 C Franklin NABA - Mark Fairbrother *et al.*  
7/11 6 Concord NABA - John Shetterly *et al.*  
7/15 5 Crane WMA, Falmouth - Andrew Griffith  
7/31 2 Grafton - Dolores Price, Marvin St. Onge  
8/7 1 Tower Hill, Boylston - MBC trip  
8/13 1 Washington - Gael Hurley  
8/29 10 MSSF, Plymouth - Matt Arey  
9/6 3 Dunstable - Tom Murray  
9/11 5 GBH, Canton - Matt Arey  
9/25 1 Appleton Farms, Ipswich - MBC Trip  
10/2 2 Tower Hill, Boylston - Andrew Griffith  
10/2 2 Sylvan Nursery, Dartmouth - Michael Newton  
10/6 1 Medford - Kim DeAndrade

### **Red-banded Hairstreak**

5/25 1 Franklin Park, Boston - Stephen Baird  
6/11 5 AP Allens Neck, Dartmouth - Andrew Griffith  
6/17 1 Franklin Park, Boston - Stephen Baird  
7/24 1 Westwood - Erik Nielsen  
8/12 1 Dartmouth - Andrew Griffith

8/15 16 Nasketucket Bay Reserve, Mattapoissett - MBC Trip  
8/26 1 Franklin Park, Boston - Stephen Baird  
8/27 4 Marion - Andrew Griffith  
8/28 10 Crane WMA, Falmouth - Garry & Annie Kessler  
8/29 20 MSSF, Plymouth - Matt Arey  
8/31 1 Dedham - Nicole Homeier  
9/4 8 AP Allens Neck, Dartmouth - MBC Trip  
9/7 1 Arnold Arboretum, Boston - Lucy Merrill-Hills  
9/11 1 GBH, Canton - Matt Arey  
10/2 1 Arnold Arboretum, Boston - Lucy Merrill-Hills

### **Early Hairstreak**

6/6 1 Berkshire County - Gael Hurley  
6/6 6 North Adams, Mt. Greylock State Res. - MBC Trip

### **Eastern Tailed-Blue**

4/24 3 Correllus State Forest, Edgartown - Matt Pelikan  
4/24 20 MSSF, Plymouth - Garry & Annie Kessler  
4/24 1 MBWMA, Newbury - Bo Zaremba  
4/27 3 Montague Plains - Bill & Nancy Callahan  
4/28 1 Barnes Airport, Westfield - Bill Callahan  
5/15 12 Freeman Way, Brewster - Larry Barry  
5/15 24 Falmouth - Fritz Bosch  
5/23 22 MV - Matt Pelikan  
6/6 14 Crane WMA, Falmouth - Joe Dwelly  
6/29 20 Crane WMA, Falmouth - Andrew Griffith  
7/4 23 N Berkshire NABA - Tom Tynning *et al.*  
7/5 31 N Worcester NABA - Wendy Howes *et al.*  
7/6 20 McDonald Nature Preserve, Wilbraham - Barry, Barry, Price, St. Onge  
7/11 25 Blackstone Valley NABA - Tom Dodd *et al.*  
7/11 34 Concord NABA - John Shetterly *et al.*  
7/18 11 Northampton NABA - Mark Fairbrother *et al.*  
7/23 1 Arlington Heights - Lisa Wolfe  
7/31 3 Grafton - Dolores Price, Marvin St. Onge  
8/8 1 Worcester Airport - Dolores Price, Marvin St. Onge  
8/26 2 Belchertown - Karl & Elise Barry  
9/6 20 Wareham, MAS Great Neck WS - Andrew Griffith  
9/15 40 Correllus State Forest, Edgartown - Matt Pelikan  
9/20 2 Georgetown Com. Gardens - Marjorie Watson

9/26 6 Crane WMA, Falmouth - Greg Hirth  
10/1 1 Rock Meadow, Belmont - Fred  
Bouchard  
10/10 1 Medford - Kim DeAndrade  
10/15 1 MSSF, Plymouth - Andrew Griffith  
10/21 2 Boston Nature Center - Lucy  
Merrill-Hills

### Spring Azure

3/30 1 Wilbraham Middle School grounds -  
Bill Callahan  
4/5 1 MBWMA, Newbury - Bo Zaremba  
4/5 1 Northborough - Ken Prince  
4/6 1 Boston Nature Center - Lucy  
Merrill-Hills  
4/6 1 Ayer - Garry Kessler  
4/10 3 Holliston - Richard Hildreth  
4/14 3 Littleton - Mark Rosenstein  
4/14 3 Petersham - Dave Small  
4/20 6 Grafton - Dolores Price  
4/21 27 Burma Road, Milton - Lucy  
Merrill-Hills  
4/24 3 Correllus State Forest, Edgartown -  
Matt Pelikan  
5/1 210 MSSF, Plymouth - MBC Trip  
5/11 25 Burma Road, Milton - Lucy  
Merrill-Hills  
5/11 40 MSSF, Plymouth - Bill & Nancy  
Callahan  
5/15 19 Foss Woods, Provincetown - Fred  
Bouchard  
5/15 12 Weir Hill Res, N Andover - MBC Trip  
5/19 92 Ware River Watershed - Mark Lynch,  
Sheila Carroll  
5/23 3 Bart's Cobble, Sheffield - Bill & Nancy  
Callahan  
5/24 11 Pikes Bridge Rd, Newbury - Marjorie  
Watson  
6/6 1 North Adams, Mt. Greylock State Res.  
- MBC Trip  
6/10 2 Grafton - Price, Miller, St. Onge

### 'Cherry Gall' Azure

5/9 6 Peaked Hill, Chilmark - Matt Pelikan  
5/12 2 FS WMA, Longmeadow - Karl & Elise  
Barry, Sue Cloutier  
5/13 1 Dennis-Greenough Ponds, Yarmouth -  
Joe Dwelly  
5/13 1 Lamson Rd, Foxborough - Brian Cassie  
5/17 2 Lamson Rd, Foxborough - Mark  
Rosenstein  
5/23 12 MV - Matt Pelikan  
5/23 1 East Wareham - Laura Sayward  
5/24 2 Ashburnham - Karl & Elise Barry, Sue  
Cloutier  
6/13 1 BMB WS, Worcester - Andrew Griffith  
*et al.*

6/25 1 Station Road, Amherst - Karl & Elise  
Barry

### 'Summer' Azure

5/25 1 Holliston - Richard Hildreth  
6/5 1 Moran WMA, Windsor - Bill & Cara  
Callahan  
6/7 2 Burma Road, Milton - Lucy  
Merrill-Hills  
6/13 1 Boston Nature Center - Lucy  
Merrill-Hills  
6/25 11 Station Road, Amherst - Karl & Elise  
Barry  
7/5 6 N Worcester NABA - Wendy Howes  
*et al.*  
7/10 1 Ashfield - Bill Benner, Joe Wicinski  
7/11 6 Concord NABA - John Shetterly *et al.*  
7/18 7 Northampton NABA - Mark Fairbrother  
*et al.*  
7/26 1 Brewster NABA - Joe Dwelly *et al.*  
8/7 1 Cass Meadows, Athol - MBC trip  
8/16 2 Arnold Arboretum, Boston - Lucy  
Merrill-Hills  
8/29 10 MSSF, Plymouth - Matt Arey  
9/6 1 Wareham, MAS Great Neck WS -  
Andrew Griffith  
9/11 2 AP Allens Neck, Dartmouth - Lauren  
Miller-Donnelly  
9/15 1 Mt. Greylock SR, Lanesborough - Gael  
Hurley  
9/25 1 Castle Hill, Ipswich - Matt Arey

### Azure Sp.

5/11 1 Plum Island, Newbury - Marjorie  
Watson  
5/15 7 Sterling - Dolores Price  
5/24 6 Ashburnham - Karl & Elise Barry, Sue  
Cloutier  
5/27 2 North Adams, Mt. Greylock State Res. -  
Mark Rosenstein  
6/3 5 S Athol - Dave Small  
6/11 1 AP Allens Neck, Dartmouth - Andrew  
Griffith  
9/14 1 Dauphinais Park, Grafton - Dolores  
Price

### Silvery Blue

4/27 1 Montague Plains - Bill & Nancy  
Callahan  
5/12 2 Pepperell - Tom Murray  
5/15 1 Oak Hill Cem., NP - Walt Thompson  
5/19 1 East Wareham - Julie L'Heureux  
5/21 3 McDonald Nature Preserve, Wilbraham  
- Bill Callahan  
5/22 7 Windsor - Bill Callahan  
5/23 6 Grafton - Dolores Price, Marvin  
St Onge  
5/26 1 Windsor - Gael Hurley

5/26 2 Breakneck Hill Conservation Land,  
Southborough - Dawn Vesey  
6/1 2 Moran WMA, Windsor - Bill Callahan  
6/6 10 Southwick WMA - Mark Fairbrother  
6/6 2 Bullitt TTOR, Ashfield - Bill Callahan  
6/8 1 Moran WMA, Windsor - Bill Callahan  
6/10 1 Grafton - Price, Miller, St. Onge

### **Gulf Fritillary**

10/7 1 Woods Hole - *fide* Laura Sayward

### **Variagated Fritillary**

7/25 1 Bart's Cobble, Sheffield - Gael Hurley  
8/25 1 Northampton CG - Garry & Annie  
Kessler  
8/30 1 Northampton CG - Barbara Volkle  
9/18 1 Sunderland - Mark Fairbrother  
10/1 1 Westport - Tom Murray  
10/2 1 Gooseberry Neck, Westport - Michael  
Newton

### **Great Spangled Fritillary**

6/6 2 Southwick WMA - Mark Fairbrother  
6/12 1 S Hadley - John & Sarah Lambdin  
6/23 2 G46 Quabbin - Wendy Howes  
6/24 6 McDonald Nature Preserve, Wilbraham  
- Barry, Barry, Callahan  
6/26 5 N Essex NABA - Mark Rosenstein *et al.*  
7/4 45 N Berkshire NABA - Tom Tynning *et al.*  
7/5 48 C Franklin NABA - Mark Fairbrother  
*et al.*  
7/5 10 N Worcester NABA - Wendy Howes  
*et al.*  
7/11 24 Blackstone Valley NABA - Tom Dodd  
*et al.*  
7/20 13 MMP, Williamstown - Bo Zaremba  
7/23 11 Muddy Brook WMA, Hardwick -  
MBC Trip  
8/25 12 Petersham - Mark Lynch, Sheila  
Carroll  
9/4 1 Whately - Elise & Karl Barry  
9/11 1 GBH, Canton - Matt Arey  
9/24 1 Athol - Dave Small  
10/1 1 Northampton CG - Steve Moore,  
Barbara Volkle  
10/1 1 Rock Meadow, Belmont - Fred  
Bouchard

### **Aphrodite Fritillary**

7/5 5 C Franklin NABA - Mark Fairbrother  
*et al.*  
7/7 1 Washington - Gael Hurley  
7/10 1 Ashfield - Bill Benner, Joe Wicinski  
7/11 1 Williamsburg Flower Hill Farm - Carol  
Duke  
7/20 1 MMP, Williamstown - Bo Zaremba  
8/7 1 West Whately - Bill Benner

### **Atlantis Fritillary**

6/16 1 Washington - Gael Hurley

7/11 4 C Berkshire NABA - Tom Tynning *et al.*

### **Silver-bordered Fritillary**

5/26 1 Washington - Gael Hurley  
6/1 11 Windsor - Bill Callahan  
6/8 6 Windsor - Bill Callahan  
6/18 2 Wendell - Mark Lynch, Sheila Carroll  
7/5 6 C Franklin NABA - Mark Fairbrother *f*  
7/6 6 Sherborn - Mark Rosenstein  
7/18 4 Northampton NABA - Mark Fairbrother  
*et al.*  
7/20 1 Stichter Yard, Newbury - Sharon  
Shichter  
7/21 1 October Mountain SF, Washington - Bo  
Zaremba  
7/24 1 Leicester - Dolores Price, Marvin  
St. Onge  
8/30 1 Adams Farm, W. Bridgewater - Don  
Adams  
10/2 2 Appleton Farms, Ipswich - Matt Arey

### **Meadow Fritillary**

5/6 1 Conway - Carl Todd  
7/4 13 N Berkshire NABA - Tom Tynning *et al.*  
8/16 3 Richmond - Gael Hurley

### **Harris' Checkerspot**

6/2 1 BMB WS, Worcester - Martha Gach  
6/6 1 Shrewsbury - Garry Kessler  
6/6 1 Worcester County - Bruce de Graaf

### **Pearl Crescent**

5/6 1 Franklin - Keith Shaw  
5/12 1 Montague Plains - Bill Callahan  
5/13 2 Grafton - Dolores Price, Marvin  
St. Onge  
5/16 1 Hardwick - Wendy Howes  
5/19 3 Williamsburg Flower Hill Farm - Carol  
Duke  
5/19 9 Adams Farm, W. Bridgewater - Don  
Adams  
5/23 44 Bart's Cobble, Sheffield - Bill &  
Nancy Callahan  
5/23 50 MV - Matt Pelikan  
5/24 17 Borden Colony, Raynham - Joe  
Dwelly  
5/27 18 Pine Swamp, Raynham - Brian Cassie  
6/1 3 Moran WMA, Windsor - Mark  
Rosenstein  
6/2 3 Hatches Harbor, Provincetown - Larry  
Barry  
6/6 12 Bullitt TTOR, Ashfield - Bill Callahan  
6/13 1 BMB WS, Worcester - Andrew Griffith  
*et al.*  
6/29 2 Allens Pond Wildlife Sanctuary,  
Dartmouth - Fred Bouchard  
7/11 98 Concord NABA - John Shetterly *et al.*  
7/11 44 C Berkshire NABA - Tom Tynning *et al.*

7/11 57 Blackstone Valley NABA - Tom Dodd *et al.*  
 7/15 200 LPWS, Barnstable - Joe Dwelly  
 7/18 316 Northampton NABA - Mark Fairbrother *et al.*  
 7/20 97 MMP, Williamstown - Bo Zarembo  
 7/24 50 Leicester - Dolores Price, Marvin St. Onge  
 7/26 155 Brewster NABA - Joe Dwelly *et al.*  
 8/4 12 Bart's Cobble, Sheffield - Jeremy Coleman  
 8/12 30 AP Allens Neck, Dartmouth - Andrew Griffith  
 8/29 25 MSSF, Plymouth - Matt Arey  
 9/4 6 Adams Farm, W. Bridgewater - Don Adams  
 9/10 150 Groton Town Forest - Tom Murray  
 9/19 11 Worcester Airport - Mark Lynch, Sheila Carroll  
 9/25 10 Appleton Farms, Ipswich - Matt Arey  
 10/2 8 AP Field Station, Dartmouth - Michael Newton  
 10/7 4 Williamstown - Dolores Price, Marvin St. Onge  
 10/13 1 Belchertown - Elise & Karl Barry  
 10/16 5 Plum Island, Newbury - Matt Arey

**Baltimore Checkerspot**  
 6/11 1 Adams Farm, W. Bridgewater - Don Adams  
 6/13 22 Crane WMA, Falmouth - Joe Dwelly  
 6/18 3 Maudslay SP, NP - Bo Zarembo  
 6/20 5 Grafton - Don Adams  
 6/22 40 Adams Farm, W. Bridgewater - Don Adams  
 6/23 1 Falmouth - Sherri VandenAkker  
 6/26 10 N Essex NABA - Mark Rosenstein *et al.*  
 6/27 35 Hennessey Property, Grafton - Dolores Price, Marvin St. Onge  
 6/29 100 Crane WMA, Falmouth - Andrew Griffith  
 6/30 1 Washington - Gael Hurley  
 7/4 23 N Berkshire NABA - Tom Tynning *et al.*  
 7/5 27 C Franklin NABA - Mark Fairbrother *et al.*  
 7/5 14 Hennessey Property, Grafton - Dolores Price, Marvin St. Onge  
 7/11 10 Blackstone Valley NABA - Tom Dodd *et al.*  
 7/11 25 C Berkshire NABA - Tom Tynning *et al.*  
 7/20 15 MMP, Williamstown - Bo Zarembo  
 7/21 6 October Mountain SF, Washington - Bo Zarembo  
 8/4 1 Barnstable County - William Freedberg

## Question Mark

5/13 1 Dennis-Greenough Ponds, Yarmouth - Joe Dwelly  
 6/1 1 Crowe's, Dennis - Joe Dwelly  
 6/5 1 Moran WMA, Windsor - Andrew Griffith  
 6/6 1 North Adams, Mt. Greylock State Res. - MBC Trip  
 6/11 1 AP Allens Neck, Dartmouth - Andrew Griffith  
 6/17 1 Natick - Greg Dysart  
 6/30 1 Amherst - Elise Barry  
 7/18 2 Northampton NABA - Mark Fairbrother *et al.*  
 7/23 1 Wilbraham - Danielle Desmaris  
 8/6 2 Moran WMA, Windsor - Jeremy Coleman  
 8/16 1 MBWMA, Newbury - Marjorie Watson  
 9/6 1 Dunstable - Tom Murray  
 10/8 1 Petersham - Mark Lynch, Sheila Carroll  
 10/8 1 Rowden Yard, Leicester - Mark Rowden

## Eastern Comma

3/21 1 Arcadia WS, Easthampton - Bill & Cara Callahan  
 3/21 1 Groton, Rocky Hill Sanc. - Brad McDonough  
 3/23 1 Hadley - Elise & Karl Barry  
 3/27 2 Arcadia WS, Easthampton - Bill & Nancy Callahan  
 4/4 1 Burma Road, Milton - Lucy Merrill-Hills  
 4/19 1 Conte NWR, Hadley - Elise & Karl Barry  
 5/3 1 FS WMA, Longmeadow - Bill & Nancy Callahan  
 6/2 1 North Adams, Mt. Greylock State Res. - Bill & Nancy Callahan  
 6/9 1 Rowden Yard, Leicester - Mark Rowden  
 6/12 1 Horn Pond Area, Woburn - Fred Bouchard  
 7/5 2 C Franklin NABA - Mark Fairbrother *et al.*  
 7/11 1 Blackstone Valley NABA - Tom Dodd *et al.*  
 8/25 1 FS WMA, Longmeadow - Garry & Annie Kessler  
 9/25 1 Wendell - Sue Cloutier  
 10/8 1 October Mountain SF, Washington - Gael Hurley  
 10/14 2 Ware River Watershed - Mark Lynch, Sheila Carroll

**Gray Comma**  
 7/7 1 Washington - Gael Hurley  
 7/21 1 Spencer - Ellen Sousa

## Compton Tortoiseshell

- 4/9 1 Ware River Watershed, Barre - Bette Robo  
6/30 1 Washington - Gael Hurley  
7/7 1 Washington - Gael Hurley  
7/22 1 MSSF, Plymouth - Andrew Griffith  
10/7 1 Williamstown - Dolores Price, Marvin St. Onge

## Mourning Cloak

- 3/10 1 Signal Hill, Canton - Madeline Champagne  
3/12 1 Mt. Tom State Reservation, Holyoke - Bill & Nancy Callahan  
3/21 7 HPM, Woburn - Michael Newton  
3/23 3 Laughing Brook WS, Hampden - Bill & Nancy Callahan  
3/27 1 Morgan Mem Old Pit, Athol - Dave Small  
4/5 5 BMB WS, Worcester - Cheryl Califano  
4/8 2 Burma Road, Milton - Lucy Merrill-Hills  
4/9 2 Sheffield - Jonathan Pierce  
4/19 3 Signal Hill, Canton - Lucy Merrill-Hills  
4/25 2 Belmont - Laura Ferraguto  
5/2 5 HPM, Woburn - MBC Trip  
5/13 1 Signal Hill, Canton - Lucy Merrill-Hills  
5/22 3 Canoe Meadows, Pittsfield - Erica Schwalm  
6/6 5 Moran WMA, Windsor - MBC Trip  
6/11 1 G45 Quabbin - Wendy Howes  
7/5 5 C Franklin NABA - Mark Fairbrother *et al.*  
7/11 3 C Berkshire NABA - Tom Tynning *et al.*  
7/24 1 Rock Meadow, Belmont - Fred Bouchard  
8/15 2 Colrain - Jeremy Coleman  
8/29 1 MSSF, Plymouth - Matt Arey  
9/4 1 Groton - Tom Murray  
9/20 3 Rock Meadow, Belmont - Fred Bouchard  
10/7 1 Williamstown - Dolores Price, Marvin St. Onge  
10/16 1 Plum Island, Newbury - Matt Arey

## Milbert's Tortoiseshell

- 6/18 1 Mt. Greylock SR, Lanesborough - Gael Hurley  
7/30 1 West Whately - Bill Benner

## American Lady

- 4/4 1 Chilmark - Allan Keith  
4/14 1 HPM, Woburn - Matt Arey  
5/1 8 MSSF, Plymouth - MBC Trip  
5/9 1 Fountain Park, Wilbraham - Bill Callahan  
5/22 1 Halibut Point SP, Rockport - Susan Hedman

- 7/15 7 Crane WMA, Falmouth - Andrew Griffith  
8/1 1 Hardwick - Wendy Howes  
8/25 3 Northampton CG - Garry & Annie Kessler  
9/4 6 Sylvan Nursery, Dartmouth - MBC Trip  
9/11 10 Dartmouth - Matt Arey  
9/20 3 Arlington Heights - Lisa Wolfe, Peter Loshin  
9/26 1 Somerville - Erin Ellingwood  
10/2 10 Gooseberry Neck, Westport - Michael Newton  
10/8 9 Sylvan Nursery, Dartmouth - Lauren Miller-Donnelly  
10/21 1 Northampton CG - Tom Murray  
10/22 3 Holliston - Richard Hildreth  
11/10 3 Nahant - Linda Pivacek  
11/13 2 Salisbury - Dawn Vesey

## Painted Lady

- 5/19 1 Millenium Park, Roxbury - Lucy Merrill-Hills  
6/5 1 Adams Farm, W. Bridgewater - Don Adams  
6/12 1 Arlington Heights - Lisa Wolfe  
6/20 1 Fort Hill, Eastham - Sherri VandenAkker  
6/30 1 Holliston - Richard Hildreth  
7/11 1 Blackstone Valley NABA - Tom Dodd *et al.*  
7/20 1 Billerica - Carol Anne Meyer  
8/18 1 Arlington Heights - Lisa Wolfe  
8/31 1 Holliston - Richard Hildreth  
9/13 1 Adams Farm, W. Bridgewater - Don Adams  
9/18 2 Concord - Fred Bouchard  
10/2 1 Northborough - Steve Moore, Barbara Volkle  
10/19 9 Nahant - Linda Pivacek  
10/24 2 Nahant - Linda Pivacek

## Red Admiral

- 5/1 1 MSSF, Plymouth - MBC Trip  
5/16 1 Hardwick - Wendy Howes  
6/9 1 MBWMA, Newbury - Marjorie Watson  
6/12 1 FS WMA, Longmeadow - Bill Callahan  
6/24 1 McDonald Nature Preserve, Wilbraham - Barry, Barry, Callahan  
6/26 1 N Essex NABA - Mark Rosenstein *et al.*  
7/5 3 N Worcester NABA - Wendy Howes *et al.*  
7/11 5 Blackstone Valley NABA - Tom Dodd *et al.*  
7/20 1 Stichter Yard, Newbury - Sharon Shichter  
7/22 1 Bart's Cobble, Sheffield - Jeremy Coleman  
7/26 2 Brewster NABA - Joe Dwelly *et al.*

8/14 1 Adams Farm, W. Bridgewater - Don Adams  
8/25 1 Bullitt TTOR, Ashfield - Tom Dodd  
9/4 1 Hardwick - Wendy Howes, Alan Rawle  
9/19 1 Hennessey Property, Grafton - Dolores Price, Marvin St. Onge  
10/1 2 Holliston - Richard Hildreth  
10/20 1 Nahant - Linda Pivacek  
11/1 1 Pine Hill, Plymouth - Robin Gross  
11/2 1 Salisbury - Kathy Diamontopoulos  
11/4 1 W Tisbury - Prudy Burt

### **Common Buckeye**

6/20 1 Noquochoke Reserve, Dartmouth - Andrew Griffith  
7/5 1 C Franklin NABA - Mark Fairbrother *et al.*  
7/14 1 East Wareham - Laura Sayward  
7/21 1 Arnold Arboretum, Boston - Stephen Baird  
7/25 1 Bart's Cobble, Sheffield - Gael Hurley  
9/11 15 Dartmouth - Matt Arey  
9/11 25 AP Field Station, Dartmouth - Lauren Miller-Donnelly  
9/25 1 Castle Hill, Ipswich - Matt Arey  
10/2 3 AP Field Station, Dartmouth - Michael Newton  
10/2 1 Spencer-Little, Newbury - Matt Arey

### **White Admiral**

6/2 1 Montague Plains - Jeremy Coleman  
6/6 1 Bullitt TTOR, Ashfield - Bill Callahan  
6/9 1 MBWMA, Newbury - Marjorie Watson  
6/18 1 Mt. Greylock SR, Lanesborough - Gael Hurley  
7/4 1 N Berkshire NABA - Tom Tynning *et al.*  
8/15 16 Colrain - Jeremy Coleman  
8/16 1 Williamstown - Pam Weatherbee  
8/25 1 Bullitt TTOR, Ashfield - Tom Dodd

### **Red-spotted Purple**

5/20 1 Rowden Yard, Leicester - Mark Rowden  
5/26 2 Franklin Park, Boston - Stephen Baird  
6/4 2 Hardwick - Mark Lynch, Sheila Carroll  
6/20 13 Erving - Mark Lynch, Sheila Carroll  
6/27 1 G36, Quabbin - Wendy Howes, Alan Rawle  
7/11 7 Concord NABA - John Shetterly *et al.*  
7/22 1 Bear Hole Reservoir, West Springfield - Erin Hough  
7/29 3 Ware River Watershed - Mark Lynch, Sheila Carroll  
8/4 2 Bart's Cobble, Sheffield - Jeremy Coleman  
8/13 14 Washington - Gael Hurley  
8/18 3 Ware River Watershed - Mark Lynch, Sheila Carroll  
8/29 3 MSSF, Plymouth - Matt Arey

9/11 1 Dartmouth - Matt Arey  
9/19 1 Worcester Airport - Mark Lynch, Sheila Carroll  
10/8 1 Holliston - Richard Hildreth

### **Viceroy**

5/23 1 Grafton - Dolores Price, Marvin St Onge  
5/27 1 McDonald Nature Preserve, Wilbraham - Bill Callahan  
5/27 5 MBWMA, Newbury - Matt Arey  
6/5 1 Windsor - Bill & Cara Callahan  
6/11 1 Pelham - Josh Rose  
6/24 4 Hardwick - Mark Lynch, Sheila Carroll  
7/4 2 N Berkshire NABA - Tom Tynning *et al.*  
7/5 3 C Franklin NABA - Mark Fairbrother *et al.*  
7/18 7 Northampton NABA - Mark Fairbrother *et al.*  
8/9 4 WMWMA, New Braintree - Wendy Howes, Alan Rawle  
8/16 2 MBWMA, Newbury - Marjorie Watson  
9/2 2 Conte NWR, Hadley - Josh Rose  
9/14 1 Millenium Park, Roxbury - Lucy Merrill-Hills  
9/26 1 Crane WMA, Falmouth - Greg Hirth  
10/8 2 Sylvan Nursery, Dartmouth - Lauren Miller-Donnelly  
10/16 2 Burrage Pond, Hanson - Susan Browne

### **Hackberry Emperor**

8/25 5 Forest Park, Springfield - Garry & Annie Kessler

### **Tawny Emperor**

7/15 2 Bart's Cobble, Sheffield - Garry Kessler

### **Northern Pearly-Eye**

6/20 1 G45 Quabbin - Wendy Howes, Alan Rawle  
6/30 1 Washington - Gael Hurley  
7/4 2 N Berkshire NABA - Tom Tynning *et al.*  
7/5 5 N Worcester NABA - Wendy Howes *et al.*  
7/11 6 C Berkshire NABA - Tom Tynning *et al.*  
7/21 1 Amherst - Josh Rose  
7/31 1 Otter River SF, Winchendon - Mark Lynch, Sheila Carroll

### **Eyed Brown**

6/16 1 Quaboag WMA, Brookfield - Mark Lynch, Sheila Carroll  
6/20 1 Erving - Mark Lynch, Sheila Carroll  
6/24 5 Tyringham - Jonathan Pierce  
6/30 1 Washington - Gael Hurley  
7/4 19 N Berkshire NABA - Tom Tynning *et al.*  
7/5 8 C Franklin NABA - Mark Fairbrother *et al.*  
7/11 1 C Berkshire NABA - Tom Tynning *et al.*

7/11 4 Blackstone Valley NABA - Tom Dodd  
*et al.*

7/24 1 Warren - Mark Lynch, Sheila Carroll

### **Appalachian Brown**

6/7 1 FS WMA, Longmeadow - Bill Callahan

6/16 1 Manchester - Patrice Murphy

7/2 13 S Berkshire NABA - Rene Wendell  
*et al.*

7/5 12 C Franklin NABA - Mark Fairbrother  
*et al.*

7/11 7 C Berkshire NABA - Tom Tynning *et al.*

7/19 12 CST, Westborough - MBC Trip

7/20 1 Nasketucket Bay Reserve, Mattapoissett  
- Joe Dwelly

7/23 1 Burma Road, Milton - Mark Rosenstein

8/4 2 Tom Swamp, Petersham - David Small

### **Little Wood-Satyr**

6/3 1 Lamson Rd, Foxborough - Madeline  
Champagne

5/21 3 Little Mount Tom, Holyoke - MBC Trip

5/23 8 Grafton - Dolores Price, Marvin  
St Onge

5/23 2 MV - Matt Pelikan

5/27 12 McDonald Nature Preserve,  
Wilbraham - Bill Callahan

6/1 38 Brewster Public Gardens, Brewster -  
Joe Dwelly

6/3 15 S Athol - Dave Small

6/10 6 Petersham - Mark Lynch, Sheila Carroll

6/18 4 Maudslay SP, NP - Bo Zarembo

6/26 4 N Essex NABA - Mark Rosenstein *et al.*

7/2 24 S Berkshire NABA - Rene Wendell  
*et al.*

7/5 39 N Worcester NABA - Wendy Howes  
*et al.*

7/5 67 C Franklin NABA - Mark Fairbrother  
*et al.*

7/6 10 Great Meadows, Lexington - Mark  
Rosenstein, Rosemary Mosco

7/11 14 Concord NABA - John Shetterly *et al.*

7/11 54 Blackstone Valley NABA - Tom Dodd  
*et al.*

7/19 1 G43 Quabbin - Wendy Howes

7/19 8 CST, Westborough - MBC Trip

7/23 2 Arnold Arboretum, Boston - Mark  
Rosenstein

7/30 1 West Whately - Bill Benner

### **Common Ringlet**

5/13 1 McDonald Nature Preserve, Wilbraham  
- Bill & Nancy Callahan

5/18 1 Westborough - Steve Moore, Barbara  
Volkle

5/19 26 Conte NWR, Hadley - Karl & Elise  
Barry

5/21 38 McDonald Nature Preserve,  
Wilbraham - Bill Callahan

5/23 23 Lime Kiln, Sheffield - Bill & Nancy  
Callahan

5/26 36 Bullitt TTOR, Ashfield - Bill Callahan

5/28 2 Delaney WMA, Stow - Garry & Annie  
Kessler

6/2 40 Wendmuth Meadow, N. Brookfield -  
MBC Trip

6/4 83 Moore SP, Paxton - Elise Barry

6/4 10 Hardwick - Mark Lynch, Sheila Carroll

6/6 40 NCM, Petersham - MBC Trip

6/18 23 Maudslay SP, NP - Bo Zarembo

8/14 100 Moore SP, Paxton - Wendy Howes,  
Alan Rawle

8/16 90 Richmond - Gael Hurley

8/25 2 Bullitt TTOR, Ashfield - Tom Dodd

8/29 1 Muddy Brook WMA, Hardwick -  
Wendy Howes, Alan Rawle

9/11 5 GBH, Canton - Matt Arey

9/25 3 Appleton Farms, Ipswich - Matt Arey

10/1 1 Rock Meadow, Belmont - Fred  
Bouchard

10/17 1 Medfield - Erik Nielsen

### **Common Wood-Nymph**

6/27 1 Oak Bluffs - Matt Pelikan

6/29 1 Bayberry Hills PL-Bike Path, Yarmouth  
- Joe Dwelly

7/2 28 S Berkshire NABA - Rene Wendell  
*et al.*

7/4 121 N Berkshire NABA - Tom Tynning  
*et al.*

7/5 25 Noquochoke Reserve, Dartmouth -  
Andrew Griffith

7/6 1 McDonald Nature Preserve, Wilbraham -  
Barry, Barry, Price, St.

7/11 13 Concord NABA - John Shetterly *et al.*

7/11 86 Blackstone Valley NABA - Tom Dodd  
*et al.*

7/11 107 C Berkshire NABA - Tom Tynning  
*et al.*

7/18 122 Northampton NABA - Mark  
Fairbrother *et al.*

7/24 30 Leicester - Dolores Price, Marvin  
St. Onge

8/8 30 Worcester Airport - Dolores Price,  
Marvin St. Onge

8/15 6 Colrain - Jeremy Coleman

8/15 7 Nasketucket Bay Reserve, Mattapoissett  
- MBC Trip

8/25 1 Bullitt TTOR, Ashfield - Tom Dodd

8/29 10 MSSF, Plymouth - Matt Arey

9/17 1 Ware River Watershed - Mark Lynch,  
Sheila Carroll

### **Monarch**

5/9 1 Westport - Lauren Miller-Donnelly

5/21 1 Belle Isle Marsh, Boston - Joe Mal  
 5/26 1 Bullitt T TOR, Ashfield - Bill Callahan  
 6/4 1 Easton - Jeff Eichorn  
 6/12 1 Marblehead - Karen Stromberg Haley  
 6/20 3 Adams Farm, W. Bridgewater - Don Adams  
 7/2 2 S Berkshire NABA - Rene Wendell *et al.*  
 7/5 30 N Worcester NABA - Wendy Howes *et al.*  
 7/10 20 Gooseberry Neck, Westport - Doug Hlousek  
 7/11 52 Concord NABA - John Shetterly *et al.*  
 7/11 47 Blackstone Valley NABA - Tom Dodd *et al.*  
 7/11 32 C Berkshire NABA - Tom Tynning *et al.*  
 7/18 156 Northampton NABA - Mark Fairbrother *et al.*  
 7/22 6 Bart's Cobble, Sheffield - Jeremy Coleman  
 7/28 50 St. Luke's fields, Westborough - Garry & Annie Kessler  
 8/6 11 Hardwick - Mark Lynch, Sheila Carroll  
 8/9 4 WMWMA, New Braintree - Wendy Howes, Alan Rawle  
 8/14 8 Tower Hill, Boylston - MBC Trip  
 8/20 8 Arlington Heights - Lisa Wolfe  
 8/25 2 Nantucket - Erin Hough  
 9/2 10 Conte NWR, Hadley - Josh Rose  
 9/4 20 Groton - Tom Murray  
 9/10 12 Hardwick - Wendy Howes  
 9/12 162 SBSR - Lucy Merrill-Hills  
 9/14 250 SBSR - Bo Zaremba  
 9/20 7 Arlington Heights - Lisa Wolfe, Peter Loshin  
 9/25 6 Adams - Jeanne Boudreau  
 9/26 50 SBSR - John Sullivan  
 9/27 118 Nahant - Linda Pivacek  
 10/1 2150 Westport - Tom Murray  
 10/2 1000 Gooseberry Neck, Westport - Michael Newton  
 10/8 10 Sylvan Nursery, Dartmouth - Lauren Miller-Donnelly  
 10/15 11 Boston Nature Center - Lucy Merrill-Hills  
 10/19 20 Squibnocket, Chilmark - Tom Dodd  
 10/22 1 Adams - Jeanne Boudreau  
 11/1 1 Plum Island, Newbury - Marjorie Watson  
 11/10 1 Nahant - Linda Pivacek  
 11/13 1 Salisbury - Dawn Vesey

**Silver-spotted Skipper**  
 5/12 1 FS WMA, Longmeadow - Karl & Elise Barry, Sue Cloutier  
 5/22 1 Lamson Rd, Foxborough - Madeline Champagne  
 5/27 1 Holliston - Richard Hildreth

6/7 2 Burma Road, Milton - Lucy Merrill-Hills  
 6/12 5 FS WMA, Longmeadow - Bill Callahan  
 6/20 1 G45 Quabbin - Wendy Howes, Alan Rawle  
 6/26 1 Petersham, Rutland Brook Sanc. - Karl & Elise Barry  
 7/5 23 N Worcester NABA - Wendy Howes *et al.*  
 7/5 53 C Franklin NABA - Mark Fairbrother *et al.*  
 7/6 6 Sherborn - Mark Rosenstein  
 7/10 15 Ashfield - Bill Benner, Joe Wicinski  
 7/11 38 Blackstone Valley NABA - Tom Dodd *et al.*  
 7/18 13 Northampton NABA - Mark Fairbrother *et al.*  
 7/20 13 MMP, Williamstown - Bo Zaremba  
 7/29 4 Holliston - Richard Hildreth  
 8/4 5 Bart's Cobble, Sheffield - Jeremy Coleman  
 8/7 24 Forest Park, Springfield - Sarah & John Lambdin  
 8/14 1 Arlington Heights - Lisa Wolfe  
 8/21 1 Meadow Road, Montague - Mark Fairbrother  
 8/25 7 Northampton CG - Garry & Annie Kessler  
 9/4 2 Whately - Elise & Karl Barry

**Long-tailed Skipper**  
 7/14 1 Gloucester - Deborah Brown  
 9/28 1 East Harwich - Mark Faherty  
 9/28 1 Harwich - Mark Faherty  
 10/1 1 Westport - Tom Murray  
 10/24 1 Cambridge - Michael Newton

**Hoary Edge**  
 6/10 5 BMB WS, Worcester - Bill & Nancy Callahan  
 6/11 1 Gill - Bill & Nancy Callahan  
 6/13 6 BMB WS, Worcester - Andrew Griffith *et al.*  
 6/24 3 BMB WS, Worcester - Mark Rosenstein  
 6/26 3 Montague Plains - Rosemary Mosco  
 7/5 3 C Franklin NABA - Mark Fairbrother *et al.*

**Southern Cloudywing**  
 6/6 2 Crane WMA, Falmouth - Joe Dwelly  
 6/13 6 Crane WMA, Falmouth - Joe Dwelly  
 6/30 2 HPM, Woburn - Mark Rosenstein  
 7/4 1 Florence - Marcia Merithew  
 7/6 2 McDonald Nature Preserve, Wilbraham - Barry, Barry, Price, St.

**Northern Cloudywing**  
 5/23 1 MV - Matt Pelikan  
 5/26 2 Brookfield - Marvin St. Onge



5/27 9 McDonald Nature Preserve, Wilbraham  
- Bill Callahan  
6/6 26 Bullitt TTOR, Ashfield - Bill Callahan  
6/10 8 BMB WS, Worcester - Bill & Nancy  
Callahan  
6/24 1 MSSF, Plymouth - Andrew Griffith  
6/29 2 Crane WMA, Falmouth - Andrew  
Griffith  
7/5 1 C Franklin NABA - Mark Fairbrother  
*et al.*

### **Dreamy Duskywing**

5/1 1 MSSF, Plymouth - MBC Trip  
5/13 3 Montague North Street WMA - Jeremy  
Coleman  
5/22 1 Worcester County - Bruce de Graaf  
5/23 1 Ware River Watershed - Mark Lynch,  
Sheila Carroll  
6/2 1 Montague Plains - Jeremy Coleman  
6/6 1 Williamsburg - Bill Callahan  
6/10 1 BMB WS, Worcester - Bill & Nancy  
Callahan

### **Sleepy Duskywing**

4/24 3 Correllus State Forest, Edgartown -  
Matt Pelikan  
4/24 2 MSSF, Plymouth - Garry & Annie  
Kessler  
4/24 1 Pilgrim Heights, Truro - Joe Dwelly  
5/1 5 Crane WMA, Falmouth - Joe Dwelly  
5/1 12 MSSF, Plymouth - MBC Trip  
5/11 1 Crane WMA, Falmouth - Joe Dwelly  
5/15 1 MSSF, Plymouth - Andrew Griffith  
6/2 1 MSSF, Plymouth - Andrew Griffith

### **Juvenal's Duskywing**

4/13 1 Montague Plains - Jeremy Coleman  
4/24 3 MSSF, Plymouth - Garry & Annie  
Kessler  
4/24 15 Correllus State Forest, Edgartown -  
Matt Pelikan  
4/27 30 Montague Plains - Bill & Nancy  
Callahan  
5/1 12 MSSF, Plymouth - MBC Trip  
5/2 8 Montague Plains - Bill & Cara Callahan  
5/9 1 Lamson Rd, Foxborough - Madeline  
Champagne  
5/11 11 Crane WMA, Falmouth - Joe Dwelly  
5/14 2 Little Mount Tom, Holyoke - Bill  
Callahan  
5/16 15 Montague Plains - Bill Callahan  
5/24 1 Royalston - Dave Small  
6/5 4 Ware River Watershed - Mark Lynch,  
Sheila Carroll  
6/6 1 Williamsburg - Bill Callahan  
6/18 1 Mt. Greylock SR, Lanesborough - Gael  
Hurley

### **Horace's Duskywing**

7/11 4 MSSF, Plymouth - Andrew Griffith  
7/14 1 East Wareham - Laura Sayward  
7/17 5 Falmouth NABA - Joe Dwelly *et al.*  
7/26 5 Brewster NABA - Joe Dwelly *et al.*  
9/24 1 Wellfleet Bay WS, Wellfleet - Mark  
Faherty

### **Wild Indigo Duskywing**

5/15 2 Weir Hill Res, N Andover - MBC Trip  
5/28 7 Delaney WMA, Stow - Garry & Annie  
Kessler  
6/2 1 Montague Plains - Jeremy Coleman  
7/18 20 Northampton NABA - Mark  
Fairbrother *et al.*  
7/30 1 West Whately - Bill Benner  
8/7 2 Tower Hill, Boylston - MBC trip  
8/26 1 Crane WMA, Falmouth - Joe Dwelly  
8/29 10 MSSF, Plymouth - Matt Arey  
9/8 1 Boston Nature Center - Lucy  
Merrill-Hills  
9/14 1 Millenium Park, Roxbury - Lucy  
Merrill-Hills  
10/2 1 Tower Hill, Boylston - Andrew Griffith

### **Common Checkered-Skipper**

5/1 1 Shrewsbury - Bruce deGraaf

### **Common Sootywing**

5/14 1 Little Mount Tom, Holyoke - Bill  
Callahan  
5/19 1 Florence - Bill Callahan  
5/25 1 Florence - Bill Callahan  
7/5 1 C Franklin NABA - Mark Fairbrother  
*et al.*  
7/5 2 N Worcester NABA - Wendy Howes *et al.*  
7/16 1 Greenfield - Thurman Hart  
7/18 1 Northampton NABA - Mark Fairbrother  
*et al.*  
7/19 1 CST, Westborough - MBC Trip  
7/24 2 Bachelor Brook/Stony Brook CA -  
MBC Trip  
9/19 1 Belmont - Fred Bouchard  
10/16 1 Newbury, Tendercrop Farm - Matt Arey

### **Arctic Skipper**

6/1 7 Moran WMA, Windsor - Bill Callahan  
6/2 1 Becket - Gael Hurley  
6/5 20 Moran WMA, Windsor - Andrew  
Griffith  
6/5 21 Moran WMA, Windsor - Bill & Cara  
Callahan  
6/6 34 Moran WMA, Windsor - MBC Trip  
6/8 24 Moran WMA, Windsor - Bill Callahan

### **Least Skipper**

6/6 1 Crane WMA, Falmouth - Joe Dwelly  
6/10 1 Grafton - Price, Miller, St. Onge

6/12 11 FS WMA, Longmeadow - Bill Callahan  
 6/26 13 N Essex NABA - Mark Rosenstein *et al.*  
 7/11 4 Blackstone Valley NABA - Tom Dodd *et al.*  
 7/23 1 Arnold Arboretum, Boston - Mark Rosenstein  
 7/26 3 Brewster NABA - Joe Dwelly *et al.*  
 8/1 1 Dunstable - Tom Murray  
 8/9 1 WMWMA, New Braintree - Wendy Howes, Alan Rawle  
 8/15 5 Ashburnham - MBC trip  
 8/28 1 Sunderland - Mark Fairbrother  
 9/11 4 AP Field Station, Dartmouth - Lauren Miller-Donnelly  
 9/12 2 Fort Hill, Eastham - Erin Ellingwood  
 9/23 1 Danvers Meadow, Danvers - Lucy Merrill-Hills  
 10/2 3 Appleton Farms, Ipswich - Matt Arey

### European Skipper

6/4 1 McDonald Nature Preserve, Wilbraham - Bill Callahan  
 6/6 3 Crane WMA, Falmouth - Joe Dwelly  
 6/13 56 Graves Farm, Williamsburg - Bill Callahan  
 6/18 250 Maudslay SP, NP - Bo Zaremba  
 6/23 20 GBH, Canton - Stephan Baird  
 6/26 6 N Essex NABA - Mark Rosenstein *et al.*  
 7/4 245 N Berkshire NABA - Tom Tynning *et al.*  
 7/5 60 Thompson Fields, Harwich - Joe Dwelly  
 7/11 5 Blackstone Valley NABA - Tom Dodd *et al.*  
 7/11 40 C Berkshire NABA - Tom Tynning *et al.*  
 7/23 1 Muddy Brook WMA, Hardwick - MBC Trip

### Fiery Skipper

9/25 2 Verrill Farm, Concord - Rosemary Mosco  
 9/25 2 Castle Hill, Ipswich - Matt Arey  
 9/27 1 Wareham - Andrew Griffith  
 10/1 1 Northampton CG - Steve Moore, Barbara Volkle  
 10/11 1 Arlington Heights - Lisa Wolfe  
 10/15 1 Boston Nature Center - Lucy Merrill-Hills  
 10/16 2 Newbury, Tendercrop Farm - Matt Arey  
 10/16 1 Waltham CG - Linda G.  
 10/20 1 Arlington Heights - Lisa Wolfe  
 10/21 2 Stichter Yard, Newbury - Sharon Stichter

### Leonard's Skipper

8/25 1 Nantucket - Erin Hough

8/26 5 Crane WMA, Falmouth - Joe Dwelly  
 8/29 1 MSSF, Plymouth - Matt Arey  
 8/31 2 Grafton - Price, Miller, St. Onge  
 9/6 1 East Wareham - Laura Sayward  
 9/11 1 Ware River Watershed - Mark Lynch, Sheila Carroll

### Cobweb Skipper

5/9 1 Correllus State Forest, Edgartown - Matt Pelikan  
 5/16 1 Montague Plains - Bill Callahan  
 5/20 6 Montague Plains - Bill & Nancy Callahan  
 5/23 3 MV - Matt Pelikan  
 5/31 1 Montague Plains - Bill & Nancy Callahan

### Indian Skipper

5/23 27 MV - Matt Pelikan  
 5/24 1 MSSF, Plymouth - Andrew Griffith  
 5/25 8 Florence - Bill Callahan  
 5/27 5 MBWMA, Newbury - Matt Arey  
 6/2 1 MSSF, Plymouth - Andrew Griffith  
 6/4 8 Florence - Bill Callahan  
 6/5 1 Sharon - MBC Trip  
 7/26 1 Holliston - Richard Hildreth

### Peck's Skipper

5/22 1 Dedham - Nicole Homeier  
 5/23 5 Bart's Cobble, Sheffield - Bill & Nancy Callahan  
 5/25 4 Arcadia WS, Easthampton - Bill Callahan  
 6/1 4 Adams Farm, W. Bridgewater - Don Adams  
 6/7 6 Woodsom Farm, Amesbury - Marjorie Watson  
 6/18 6 Maudslay SP, NP - Bo Zaremba  
 6/26 9 N Essex NABA - Mark Rosenstein *et al.*  
 7/4 69 N Berkshire NABA - Tom Tynning *et al.*  
 7/11 25 C Berkshire NABA - Tom Tynning *et al.*  
 7/21 1 October Mountain SF, Washington - Bo Zaremba  
 8/1 4 BMB WS, Worcester - Dolores Price, Marvin St. Onge  
 8/8 1 Dedham - Nicole Homeier  
 8/18 2 Holliston - Richard Hildreth  
 8/25 1 Wellesley - Susan Zelenko  
 9/4 1 Belmont - Fred Bouchard  
 9/18 3 Oak Bluffs - Matt Pelikan  
 10/12 1 Cambridge - Rosemary Mosco  
 10/16 3 Newbury, Tendercrop Farm - Matt Arey

### Tawny-edged Skipper

5/17 1 Boston Nature Center - Lucy Merrill-Hills  
 5/21 1 Little Mount Tom, Holyoke - MBC Trip  
 5/23 1 MV - Matt Pelikan

5/23 2 Bart's Cobble, Sheffield - Bill & Nancy Callahan  
 6/2 1 Wendmuth Meadow, N. Brookfield - MBC Trip  
 6/18 1 Meadow Road, Montague - Mark Fairbrother  
 7/1 1 Noquochoke Reserve, Dartmouth - Andrew Griffith  
 7/4 4 N Berkshire NABA - Tom Tynning *et al.*  
 7/5 3 C Franklin NABA - Mark Fairbrother *et al.*  
 7/16 1 Holliston - Richard Hildreth  
 8/1 2 BMB WS, Worcester - Dolores Price, Marvin St. Onge  
 8/16 2 Arnold Arboretum, Boston - Lucy Merrill-Hills  
 8/25 1 West Whately - Bill Benner  
 8/26 1 Crane WMA, Falmouth - Joe Dwelly  
 9/11 3 Dartmouth - Matt Arey  
 9/25 1 Castle Hill, Ipswich - Matt Arey

### Crossline Skipper

6/29 1 Crane WMA, Falmouth - Andrew Griffith  
 6/30 1 Washington - Gael Hurley  
 7/4 1 N Berkshire NABA - Tom Tynning *et al.*  
 7/5 1 Belchertown - Elise Barry  
 7/5 2 N Worcester NABA - Wendy Howes *et al.*  
 7/6 3 McDonald Nature Preserve, Wilbraham - Barry, Barry, Price, St.  
 7/11 7 Concord NABA - John Shetterly *et al.*  
 7/11 6 Blackstone Valley NABA - Tom Dodd *et al.*  
 7/11 9 C Berkshire NABA - Tom Tynning *et al.*  
 7/16 4 Holliston - Richard Hildreth  
 7/18 5 Northampton NABA - Mark Fairbrother *et al.*  
 7/20 1 HPM, Woburn - Mark Rosestein  
 8/21 1 Holliston - Richard Hildreth

### Long Dash

5/23 2 Grafton - Dolores Price, Marvin St Onge  
 6/2 2 Little River Nature Trail, NP - Bo Zaremba  
 6/2 4 BMB WS, Worcester - Martha Gach  
 6/4 3 Florence - Bill Callahan  
 6/7 11 Woodsom Farm, Amesbury - Marjorie Watson  
 6/10 24 Shrewsbury - Bruce de Graaf  
 6/12 36 Groton Town Forest - Tom Murray  
 6/18 26 Maudslay SP, NP - Bo Zaremba  
 6/23 5 MSSF, Plymouth - Andrew Griffith  
 7/4 30 N Berkshire NABA - Tom Tynning *et al.*  
 7/7 1 MBWMA, Newbury - Bo Zaremba  
 7/11 1 C Berkshire NABA - Tom Tynning *et al.*

9/6 1 Wareham, MAS Great Neck WS - Andrew Griffith  
 9/11 1 GBH, Canton - Matt Arey

### Northern Broken-Dash

6/30 1 HPM, Woburn - Mark Rosenstein  
 7/4 8 N Berkshire NABA - Tom Tynning *et al.*  
 7/5 4 N Worcester NABA - Wendy Howes *et al.*  
 7/5 10 C Franklin NABA - Mark Fairbrother *et al.*  
 7/11 10 Blackstone Valley NABA - Tom Dodd *et al.*  
 7/15 1 LPWS, Barnstable - Joe Dwelly  
 7/16 32 West Whately - Bill Benner  
 7/18 35 Northampton NABA - Mark Fairbrother *et al.*  
 7/22 1 Bart's Cobble, Sheffield - Jeremy Coleman  
 7/26 48 Brewster NABA - Joe Dwelly *et al.*  
 8/7 2 West Whately - Bill Benner  
 8/7 6 Tower Hill, Boylston - MBC trip  
 8/15 2 Ashburnham - MBC trip  
 8/31 1 Hardwick - Wendy Howes, Alan Rawle  
 9/6 1 Wareham, MAS Great Neck WS - Andrew Griffith

### Little Glassywing

6/18 3 Maudslay SP, NP - Bo Zaremba  
 6/24 2 BMB WS, Worcester - Mark Rosenstein  
 6/26 37 N Essex NABA - Mark Rosenstein *et al.*  
 7/4 10 N Berkshire NABA - Tom Tynning *et al.*  
 7/5 28 C Franklin NABA - Mark Fairbrother *et al.*  
 7/10 2 Hardwick - Wendy Howes, Alan Rawle  
 7/11 21 Blackstone Valley NABA - Tom Dodd *et al.*  
 7/11 2 C Berkshire NABA - Tom Tynning *et al.*  
 7/16 3 West Whately - Bill Benner  
 7/20 1 HPM, Woburn - Mark Rosestein  
 7/24 1 Warren - Mark Lynch, Sheila Carroll

### Sachem

7/31 1 Barnstable - Alice Witmer  
 9/4 6 AP Allens Neck, Dartmouth - MBC Trip  
 9/10 5 Sylvan Nursery, Dartmouth - Andrew Griffith  
 9/11 25 AP Field Station, Dartmouth - Lauren Miller-Donnelly  
 9/15 1 Correllus State Forest, Edgartown - Matt Pelikan  
 9/18 65 Oak Bluffs - Matt Pelikan  
 10/1 6 AP Field Station, Dartmouth - Andrew Griffith  
 10/1 5 Helfand Community Gardens, Dartmouth - Andrew Griffith  
 10/2 1 Spencer-Little, Newbury - Matt Arey

10/2 20 AP Field Station, Dartmouth - Michael  
Newton  
10/7 1 Westport - Lauren Miller-Donnelly  
10/8 2 Sylvan Nursery, Dartmouth -  
Lauren Miller-Donnelly

### **Delaware Skipper**

6/12 2 Horn Pond Area, Woburn - Fred  
Bouchard  
6/27 2 MSSF, Plymouth - Andrew Griffith  
7/4 3 N Berkshire NABA - Tom Tynning *et al.*  
7/5 24 C Franklin NABA - Mark Fairbrother  
*et al.*  
7/5 7 N Worcester NABA - Wendy Howes  
*et al.*  
7/6 20 MSSF, Plymouth - Andrew Griffith  
7/9 2 G43 Quabbin - Wendy Howes, Alan  
Rawle  
7/11 10 MSSF, Plymouth - Andrew Griffith  
7/11 8 Blackstone Valley NABA - Tom Dodd  
*et al.*  
7/11 7 Concord NABA - John Shetterly *et al.*  
7/17 4 Falmouth NABA - Joe Dwelly *et al.*  
7/18 9 Northampton NABA - Mark Fairbrother  
*et al.*  
7/20 1 MMP, Williamstown - Bo Zaremba

### **Mulberry Wing**

7/5 1 Hennessey Property, Grafton - Dolores  
Price, Marvin St. Onge  
7/5 5 C Franklin NABA - Mark Fairbrother  
*et al.*  
7/10 1 Hardwick - Wendy Howes, Alan Rawle  
7/11 13 Blackstone Valley NABA - Tom Dodd  
*et al.*  
7/11 22 Concord NABA - John Shetterly *et al.*  
7/18 19 Northampton NABA - Mark  
Fairbrother *et al.*  
7/19 4 Cedar Hill, Northborough - MBC Trip  
7/19 1 CST, Westborough - MBC Trip  
7/21 18 October Mountain SF, Washington -  
Bo Zaremba  
7/21 4 October Mountain, Pittsfield - Bo  
Zaremba  
7/23 2 Muddy Brook WMA, Hardwick -  
MBC Trip  
7/24 2 Warren - Mark Lynch, Sheila Carroll

### **Hobomok Skipper**

5/23 1 Lime Kiln, Sheffield - Bill & Nancy  
Callahan  
5/24 7 FS WMA, Longmeadow - Bill & Nancy  
Callahan  
5/27 2 MBWMA, Newbury - Matt Arey  
5/27 1 Pine Swamp, Raynham - Brian Cassie  
6/2 4 BMB WS, Worcester - Martha Gach  
6/6 4 North Adams, Mt. Greylock State Res. -  
Andrew Griffith

6/6 1 Bullitt TTOR, Ashfield - Bill Callahan  
6/8 8 Windsor - Bill Callahan  
6/10 6 BMB WS, Worcester - Bill & Nancy  
Callahan  
6/13 6 Graves Farm, Williamsburg - Bill  
Callahan  
6/18 1 Wendell - Mark Lynch, Sheila Carroll  
6/24 1 BMB WS, Worcester - Mark Rosenstein  
6/26 1 Ware - Bill Callahan

### **Zabulon Skipper**

5/18 1 FS WMA, Longmeadow - Bill & Nancy  
Callahan  
5/19 1 Millenium Park, Roxbury - Lucy  
Merrill-Hills  
5/21 2 Little Mount Tom, Holyoke - MBC Trip  
5/22 1 Oak Bluffs - Matt Pelikan  
5/24 8 Borden Colony, Raynham - Joe Dwelly  
5/26 3 Caratunk WR, Seekonk - Wendy Miller  
5/27 9 Burma Road, Milton - Lucy  
Merrill-Hills  
6/4 5 McDonald Nature Preserve, Wilbraham  
- Bill Callahan  
6/7 6 Burma Road, Milton - Lucy  
Merrill-Hills  
6/10 5 AP Allens Neck, Dartmouth - Andrew  
Griffith  
6/12 7 FS WMA, Longmeadow - Bill Callahan  
6/20 1 Sherborn - Michael Newton  
8/2 1 Wareham, MAS Great Neck WS -  
Andrew Griffith  
8/7 1 Forest Park, Springfield - Sarah & John  
Lambdin  
8/15 20 MHF, Sharon - Erik Nielsen  
8/21 1 Carlisle - Judy Asarkof  
8/30 1 Northampton CG - Barbara Volkle  
9/4 1 Hadley - Wendy Howes, Alan Rawle  
9/6 1 Holliston - Richard Hildreth  
9/14 2 Adams Farm, W. Bridgewater - Don  
Adams  
9/25 1 Appleton Farms, Ipswich - Matt Arey  
9/26 1 E Longmeadow - Deborah Bentley

### **Broad-winged Skipper**

7/2 1 S Berkshire NABA - Rene Wendell *et al.*  
7/20 1 Stichter Yard, Newbury - Sharon  
Shichter  
7/21 2 Wareham - Andrew Griffith  
7/23 4 BMB WS, Worcester - Steve Moore,  
Barbara Volkle  
7/23 1 Burma Road, Milton - Mark Rosenstein  
7/24 1 Warren - Mark Lynch, Sheila Carroll  
7/26 16 Brewster NABA - Joe Dwelly *et al.*  
7/31 3 Grafton - Dolores Price, Marvin  
St. Onge  
8/2 1 Wareham, MAS Great Neck WS -  
Andrew Griffith  
9/11 1 Sylvan Nursery, Dartmouth - Lauren

Miller-Donnelly

### Dion Skipper

- 7/2 2 S Berkshire NABA - Rene Wendell *et al.*  
7/4 3 N Berkshire NABA - Tom Tynning *et al.*

### Black Dash

- 7/5 1 N Worcester NABA - Wendy Howes  
*et al.*  
7/11 2 Concord NABA - John Shetterly *et al.*  
7/11 4 Blackstone Valley NABA - Tom Dodd  
*et al.*  
7/18 4 Northampton NABA - Mark Fairbrother  
*et al.*

### Two-spotted Skipper

- 7/4 1 New Salem - Garry & Annie Kessler  
6/25 1 Washington - Gael Hurley  
6/27 1 Hinsdale - Gael Hurley

### Dun Skipper

- 6/26 1 Montague Plains - Rosemary Mosco  
7/2 1 S Berkshire NABA - Rene Wendell *et al.*  
7/4 13 N Berkshire NABA - Tom Tynning *et al.*  
7/5 32 C Franklin NABA - Mark Fairbrother  
*et al.*  
7/7 21 MBWMA, Newbury - Bo Zaremba  
7/11 25 C Berkshire NABA - Tom Tynning *et al.*  
7/11 58 Blackstone Valley NABA - Tom Dodd  
*et al.*  
7/15 1 LPWS, Barnstable - Joe Dwelly  
7/18 59 Northampton NABA - Mark  
Fairbrother *et al.*  
7/21 28 October Mountain SF, Washington -  
Bo Zaremba  
7/26 21 Brewster NABA - Joe Dwelly *et al.*  
7/31 2 Otter River SF, Winchendon - Mark  
Lynch, Sheila Carroll  
8/1 3 Dunstable - Tom Murray  
8/7 4 West Whately - Bill Benner  
8/25 1 West Whately - Bill Benner  
8/26 3 Belchertown - Karl & Elise Barry  
9/11 2 Sylvan Nursery, Dartmouth - Matt Arey  
9/19 1 Belmont - Fred Bouchard

### Dusted Skipper

- 5/21 1 Little Mount Tom, Holyoke - MBC Trip  
5/23 7 MV - Matt Pelikan  
5/25 1 Oak St. PL, Shrewsbury - Dolores  
Price, Wendy Miller

- 5/27 3 Lamson Rd, Foxborough - Madeline  
Champagne  
5/31 3 Montague Plains - Bill & Nancy  
Callahan  
6/2 2 Little River Nature Trail, NP - Bo  
Zaremba  
6/2 3 MSSF, Plymouth - Andrew Griffith  
6/4 7 Florence - Bill Callahan  
6/5 1 Windsor - Bill & Cara Callahan  
6/5 1 Foxborough - Danielle Desmaris  
6/10 1 Shrewsbury - Price, Miller, St. Onge  
6/13 2 BMB WS, Worcester - Andrew Griffith  
*et al.*

### Pepper and Salt Skipper

- 5/23 1 Grafton - Dolores Price, Marvin  
St Onge  
5/24 1 Royalston - Dave Small  
5/24 1 FS WMA, Longmeadow - Bill & Nancy  
Callahan  
5/24 1 Borden Colony, Raynham - Joe Dwelly  
5/26 1 Washington - Gael Hurley  
5/27 7 Pine Swamp, Raynham - Brian Cassie  
5/27 1 MBWMA, Newbury - Matt Arey  
6/1 1 Windsor - Bill Callahan  
6/3 1 Mt. Greylock SR, Lanesborough -  
Jonathan Pierce  
6/5 4 Moran WMA, Windsor - Andrew  
Griffith  
6/6 9 North Adams, Mt. Greylock State Res.  
- MBC Trip

### Ocola Skipper

- 9/4 3 Sylvan Nursery, Dartmouth - MBC Trip  
9/8 1 Harwich - Mark Faherty  
9/25 1 Verrill Farm, Concord - Rosemary  
Mosco  
9/25 1 Castle Hill, Ipswich - Matt Arey  
10/1 1 Northampton CG - Steve Moore,  
Barbara Volkle  
10/1 1 Allens Pond Wildlife Sanctuary,  
Dartmouth - Tom Murray  
10/6 3 Wareham - Andrew Griffith  
10/8 2 Sylvan Nursery, Dartmouth - Lauren  
Miller-Donnelly  
10/15 1 MSSF, Plymouth - Andrew Griffith  
10/17 1 Medfield - Erik Nielsen  
10/25 1 Holliston - Richard Hildreth



Harvester (*Fenisea tarquinus*) larvae with woolly aphids, 10/1/21, Boston, MA, Madeline Champagne

## Beech Trees Host Harbinger Mourning Cloaks

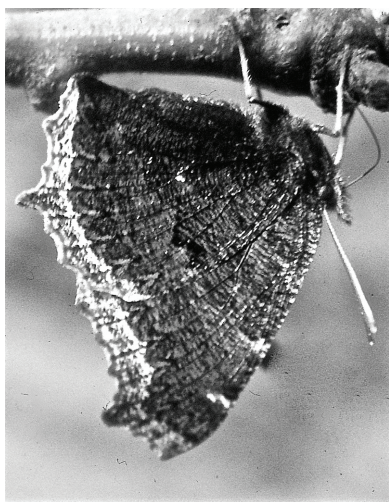
Article and photos by Tor Hansen



Along with Silver spotted Skippers, Monarchs, and Tiger Swallowtails, flitting about our flower garden in Englewood, New Jersey, when I was about 8 years old, Mourning Cloaks were among the first lepidoptera to stoke my love for butterflies. Their incredible beauty includes overall maroon brown wing scales fringed by a row of blue spots outlined in angular gold edges, much like the gold leaf outlining illuminated manuscripts of the Middle Ages. Their soft spiny larvae feed on pussy willow, elm, and birch. Eggs are laid in clusters. Larvae are colonial. I find a particular joy in watching the metamorphosis from inverted larva molting into chrysalis, and the butterfly emerging with wings expanding. Notice the unique antennae uncoiling in two pieces, to be fused into one hollow sipping tube called a proboscis, a remarkable accomplishment made by an innovative flutterfly!

As the story goes, in the town of Camberwell, England, the Mourning Cloak is known as The





Camberwell Beauty. When a funeral cortege was forming, young ladies attending were wearing deep brown gowns, and at the ankles the dress was edged in gold thread. Just then a Camberwell Beauty alighted at the hem line and perfectly resembled the lady's dress, gold edge and all, astonishing everyone!

Early signs of spring feature Mourning Cloaks that take sap from certain beech trees in

Beech Forest in the heart of the Provincelands, Cape Cod. As winter appears to abate, *Nymphalis antiopa* takes advantage of sap on tap from small wounds in the bark of beeches (*Fagus grandifolia*) afflicted with a known disease called...Beech Bark Disease. According to Wikipedia research, specialists assert that Woolly Beech Scales, genus *Cryptococcus*, attack certain beech trees, allowing the fungi that cause Beech Bark Disease (*Nectria* species) to enter the open wounds. Look for trees with minute lesions oozing brown sap, and telltale flies and bees flitting about, feeding on sap in the midst of a potentially lethal tree disease. But, are all these disease-prone beeches that become oases for butterflies actually afflicted by identifiable disease, or are they oases for sap, free from disease, like dune oaks that also supply sap for the thirsty.

As wintry winds slacken, the trees growing in the sheltered leeward side of the tall dunes and dune swales thaw enough to raise ground temperatures, so to arouse anglewing adults and Lycaenid pupae from overwintering hibernation. They take to the warming air, in search of replenishing fast energy. Follow them as they flit and roost among the fallen tan beech leaves, where they thermo-regulate with open wings, basking in the warming sunlight. Look for ribbon snakes (*Thamnophis sauritus*) on the hunt for amphibians.

Follow the old railroad trail, an embankment, edged in dune-tolerant bushy red, scarlet, black, and scrub oaks, that leads to Race Point Lighthouse, where one may find roosting and hill topping butterflies. They flit out upon approach, and will flutter under an oak canopy where they alight on thin branches to imbibe sap flowing from openings in the bark. Where the persistent winds have piled up rows of shifting sand, over time these dunes gave rise to interspersed dune swales that provide shelter for wild azalea, wintergreen, and pinesap amid the star flowers growing down in the leaf litter. Over time overwintering Mourning Cloaks and Question Marks have learned to seek oak sap, and extract fluids from acorns as well! Enjoy beholding how innovative these denizens, including Red Admirals, are, to bend and flex their versatile



proboscises to suck up sap, as though they “drill” for sap within wells opened by previous insects (especially bees and wasps and of course the ants! ) There are sites where these three butterfly species are found to sip sap side by side.

Beech Forest is a hardwood climax forest nestled in a wide dune swale between tall shifting sand dunes. Here assorted oaks, willows, red maple, and beech are well anchored and deep rooted, despite some almost buried under wind driven sand, and some showing snarled roots with surface sands pulled out from underneath mossy ground covers. Through millennia, Beech Forest has become an exceptional and vital oasis for migrating song birds like orioles, towhees, and a cornucopia of famished warblers. So prolific are the hardwood leaves that supply a myriad of moth larvae, that many species of songbirds en route to northern nesting grounds return year after year to dine in the virgin greenery.

Pitch pines and Swiss Mountain pines, planted during the depression years by the Civilian Conservation Corps, also stabilize drifting sand. Here and there a shallow topsoil belies enough sheltered terrain to sport extensive mats of bearberry, beach heather, and scarce broom-crowberry, a unique species composition that the National Seashore elected to protect as the Provincelands. Small Lycaenids like Brown, Hoary, and Eastern Pine Elfins become prolific where bearberry supplies fast energy needs. Imbibing Brown Elfins, only the size of one’s two thumbnails, are colorful as a dreamy kaleidoscope. These populations are subject to yearly flux due to insect disease and parasites. Old growth beech trees suggest ancient roots adapting to rigorous climate change, surviving several waves of ice ages in the Pleistocene Epoch. Beech Forest Pond is the result of a huge block of ice creating a watery depression from its enormous weight, and is home to ducks, geese, and diverse dragonflies. Spotted Turtles too! Scattered throughout these wetlands are mats of wild cranberry, *Vaccinium macrocarpon*, home to Bog Coppers, exquisite in color. Larvae feed on cranberry and adults imbibe at *Vaccinium* in bloom, whose pink flowers sprout just above vernal pools.

## 2021 Donors and Volunteers

Monetary and in-kind contributions include donating money; donating goods to be sold, auctioned, or used for the club's benefit; donating the cost of a good or service; other donations.

Volunteer Services include leading field trips or counts; producing and selling club goods; working for Barbara J. Walker Butterfly Festival; manning the MBC table at Mass Land Conservation Conference or other events; helping at club meetings; running the MBC Monarch Guardian Program; leading walks for, or speaking to, trusts or other organizations; conducting butterfly institutes; leading and participating in the Hessel's and Acadian Hairstreak Project, and the club anniversary projects; contributing articles and photos to the club journal (Spring, Fall); serving on the Executive Committee or the Nominating Committee; administering MA Butterfly Club Facebook group and the MassLep listserve; other services. Apologies to anyone we inadvertently missed, and a grateful thank you to you all!

### Monetary and In-Kind Contributions

Harvey Allen  
Tracey Alsobrook  
Elise Barry  
Karl Barry  
Ann Bucklin  
Bill Callahan  
Nancy Callahan in memory  
of Bill Callahan  
Carol Duke  
Erin Ellingwood  
Pat Foster  
Beth Herr  
Andrew Griffith  
Lauren Griffith  
Richard Kelley  
Wendy Miller  
Frank Model  
Steve Moore  
Rosemary Mosco  
Yuval Shavit  
Barbara Volkle  
Dick Walton

Karl Barry  
Bill Benner  
Susan Browne  
Bill Callahan  
Nancy Callahan and family  
Brian Cassie  
Madeline Champagne  
Jeremy Coleman  
Bruce deGraaf  
Danielle Desmarais  
Cathy Dodd  
Tom Dodd  
Carol Duke  
Joe Dwelly  
Greg Dysart  
Mark Faherty  
Mark Fairbrother  
Tom French  
Martha Gach  
Tom Gagnon  
Linda Graetz  
Andrew Griffith  
Lauren Griffith  
Erin Haugh  
Howard Hoople  
Russ Hopping  
Wendy Howes  
Gael Hurley  
Bart Jones  
Garry Kessler

Jake McCumber  
Mark Mello  
Lucy Merrill-Hills  
James Micheline  
Wendy Miller  
Lauren Miller-Donnelly  
Frank Model  
Steve Moore  
Rosemary Mosco  
Tom Murray  
Mike Nelson  
Michael Newton  
Erik Nielson  
Moe O'Connor  
Dolores Price  
Alan Rawle  
Annie Reid  
Mark Rosenstein  
Bernie Rubenstein  
Dave Small  
Peter Trimble  
Tom Tynning  
Danielle Vaillancourt  
Dawn Vesey  
Barbara Volkle  
Dick Walton  
Rene Wendell  
Tom Whelan  
Lisa Wolfe  
Bo Zaremba

### Volunteer Services

Don Adams  
Elise Barry

## Submission of Articles, Illustrations, and Season Records

We encourage all members to contribute to *Massachusetts Butterflies*. Articles, illustrations, photographs, butterfly field trip reports, garden reports, and book reviews are all welcome, and should be sent to the Editor by August 31 for the Fall issue, and January 31 for the Spring issue.

Send NABA Fourth of July count results to Karl Barry at:

[karl@massbutterflies.org](mailto:karl@massbutterflies.org) by **August 15** for inclusion in the Fall issue. Send your season sightings and records to Mark Fairbrother at:

[mark@massbutterflies.org](mailto:mark@massbutterflies.org), by **December 15** (or earlier if possible!) for inclusion in the Spring issue. Records may now be submitted via the online checklist and reporting form, which is available for download from our website at: <http://www.massbutterflies.org/club-publications.asp>

## Contributions

As a chapter of the North American Butterfly Association, the Massachusetts Butterfly Club is a non-profit, tax-exempt organization under section 501(c)(3) of the Internal Revenue Code. Gifts (in excess of dues) to the Massachusetts Butterfly Club are gifts to NABA, and are fully tax deductible.

## *Massachusetts Butterflies* Advisory Board

Brian Cassie, Foxboro, MA

Madeline Champagne, Foxboro, MA

Mark Fairbrother, Montague, MA

Richard Hildreth, Holliston, MA

Carl Kamp, Royalston, MA

Matt Pelikan, Oak Bluffs, MA

*Massachusetts Butterflies* has been published continuously since 1993. Previous issues are viewable at <http://www.massbutterflies.org/club-publications.asp> after a one-year time lag. Print copies may be ordered for \$7 each, if still available. Send a check made out to "NABA-Massachusetts Butterfly Club" to our secretary, Barbara Volke, at the address on the inside front cover.





Eastern Tailed-Blue (*Everes comyntas*), 7/15/21,  
Longmeadow, MA, Jeremy Coleman



Question Mark (*Polygonia interrogationis*),  
8/28/21, Sterling, MA, Dawn Vesey